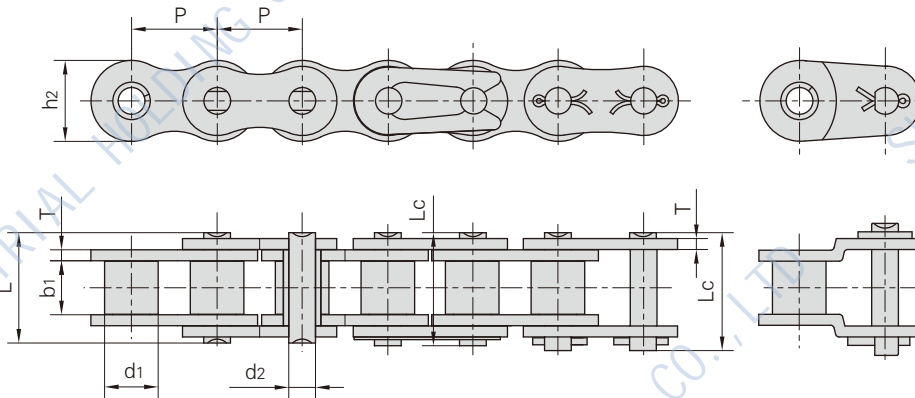


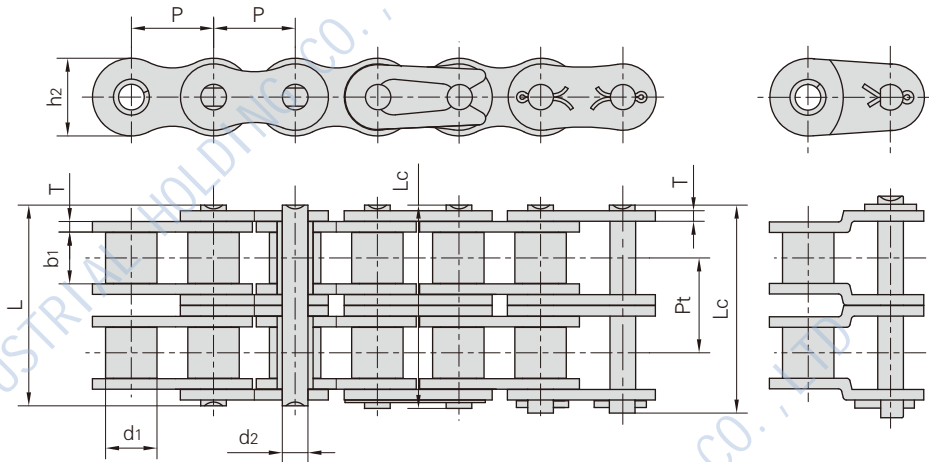
1.1.8 STAINLESS STEEL CHAIN

Stainless steel chains are suitable for corrosive conditions involving food, chemical pharmaceuticals, etc. and also suitable for high and low temperature conditions.



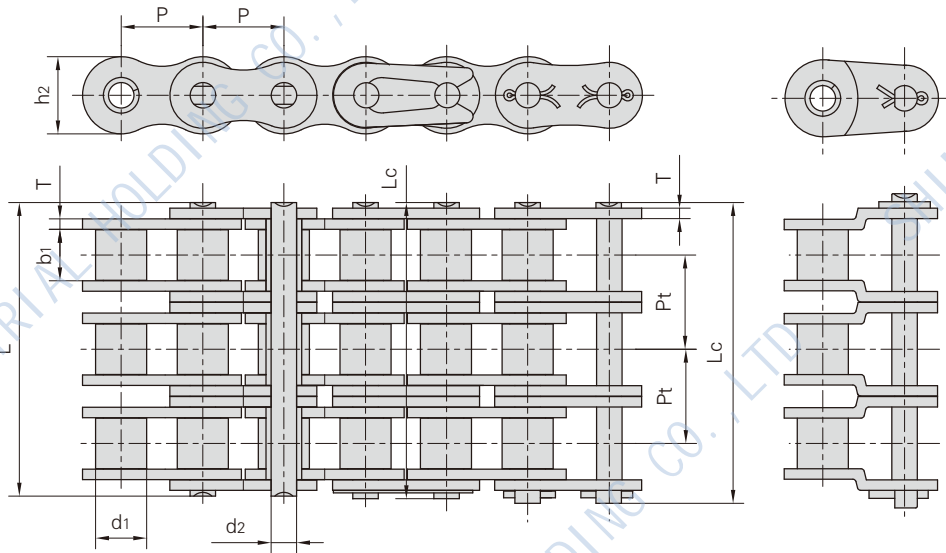
Chain No.	Pitch	Roller Diameter	Width Between Inner Plates	Pin Diameter	Pin Length		Inner Plate Depth	Plate Thickness	Breaking Load	Weight Per Meter
	P	d1 (max)	b1 (min)	d2 (max)	L (max)	Lc (max)	h2 (max)	t/T (max)	Q	q
	mm	mm	mm	mm	mm	mm	mm	Mm	kN/lbf	Kg/m
*04CSS-1	6.350	3.30	3.18	2.31	7.90	8.40	6.00	0.80	2.5/568	0.15
*06CSS-1	9.525	5.08	4.77	3.58	12.40	13.17	9.00	1.30	5.5/1250	0.33
08ASS-1	12.700	7.95	7.85	3.96	16.60	17.80	12.00	1.50	9.6/1250	0.63
41SS-1	12.700	7.77	6.25	3.58	13.75	15.00	9.91	1.30	6.0/1360	0.46
10ASS-1	15.875	10.16	9.40	5.08	20.70	22.20	15.09	2.03	15.2/3455	1.03
12ASS-1	19.050	11.91	12.57	5.94	25.90	27.70	18.00	2.42	21.7/4932	1.51
16ASS-1	25.400	15.88	15.75	7.92	32.70	35.00	24.00	3.25	38.9/8841	2.62
20ASS-1	31.750	19.05	18.90	9.53	40.40	44.70	30.00	4.00	60.0/13636	3.94
24ASS-1	38.100	22.23	25.22	11.10	50.30	54.30	35.70	4.80	75.0/16861	5.72
28ASS-1	44.450	25.40	25.22	12.70	54.40	59.00	41.0	5.60	102.0/22931	7.70
32ASS-1	50.800	28.58	31.55	14.27	64.80	69.60	47.80	6.40	133.8/30079	10.20
04BSS-1	6.000	4.00	2.80	1.85	6.80	7.80	5.00	0.60	2.0/455	0.11
05BSS-1	8.000	5.00	3.00	2.31	8.20	8.90	7.10	0.80	3.5/795	0.20
*06BSS-1	9.525	6.35	5.72	3.28	13.15	14.10	8.20	1.30	6.2/1409	0.41
08BSS-1	12.700	8.51	7.75	4.45	16.70	18.20	11.80	1.60	12.0/2727	0.70
10BSS-1	15.875	10.16	9.65	5.08	19.50	20.90	14.70	1.70	14.5/3295	0.94
12BSS-1	19.050	12.07	11.68	5.72	22.50	24.20	16.00	1.85	18.5/4205	1.16
16BSS-1	25.400	15.88	17.02	8.28	36.10	37.40	21.00	4.15/3.1	40.0/9091	2.73
20BSS-1	31.750	19.05	19.56	10.19	41.30	45.00	26.40	4.5/3.5	59.0/13409	3.73
24BSS-1	38.100	25.40	25.40	14.63	53.40	57.80	33.20	6.0/4.8	104.0/25454	7.20
28BSS-1	44.450	27.94	30.99	15.90	65.10	69.50	36.70	7.5/6.0	120.0/26977	9.21
32BSS-1	50.800	29.21	30.99	17.81	66.00	71.00	42.00	7.0/6.0	150.0/34090	10.22

1.1.8 STAINLESS STEEL CHAIN



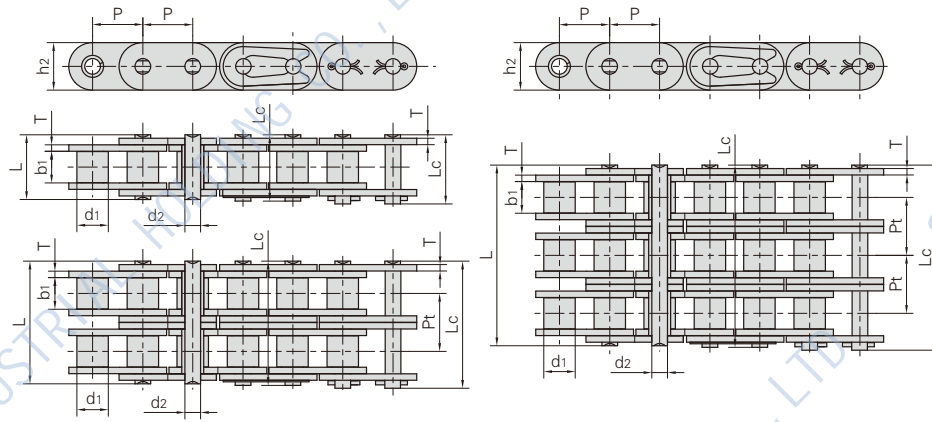
Chain No.	Pitch	Roller Diameter	Width Between Inner Plates	Pin Diameter	Pin Length		Inner Plate Depth	Plate Thickness	Transverse Pitch	Breaking Load	Weight Per Meter
	P	d1 (max)	b1 (min)	d2 (max)	L (max)	Lc (max)	h2 (max)	t/T (max)	Pt	Q	q
	mm	mm	mm	mm	mm	mm	mm	Mm	mm	kN/lbf	Kg/m
*04CSS-2	6.350	3.30	3.18	2.31	14.50	15.00	6.00	0.80	6.40	5.0/1124	0.28
*06CSS-2	9.525	5.08	4.77	3.58	22.50	23.30	9.00	1.30	10.13	11/2473	0.70
08ASS-2	12.700	7.95	7.85	3.96	31.00	32.20	12.00	1.50	14.38	19.2/4316	1.30
41SS-2	12.700	7.77	6.25	3.58	25.70	26.90	9.91	1.30	11.95	12.0/2698	0.91
10ASS-2	15.875	10.16	9.40	5.08	38.90	40.40	15.09	2.03	18.11	30.4/6834	2.18
12ASS-2	19.050	11.91	12.57	5.94	48.80	50.50	18.00	2.42	22.78	43.4/9757	2.92
16ASS-2	25.400	15.88	15.75	7.92	62.70	64.30	24.00	3.25	29.29	77.8/17490	5.15
20ASS-2	31.750	19.05	18.90	9.53	76.40	80.50	30.00	4.00	35.76	120.0/26977	7.80
24ASS-2	38.100	22.23	25.22	11.10	95.80	99.70	35.70	4.80	45.44	150.0/33720	11.70
28ASS-2	44.450	25.40	25.22	12.70	103.30	107.90	41.0	5.60	48.87	204.0/45859	15.14
32ASS-2	50.800	28.58	31.55	14.27	123.30	128.10	47.80	6.40	58.55	267.6/60156	20.14
04BSS-2	6.000	4.00	2.80	1.85	12.30	13.30	5.00	0.60	5.50	4.0/899	0.22
05BSS-2	8.000	5.00	3.00	2.31	13.90	14.50	7.10	0.80	5.64	6.2/1394	0.37
*06BSS-2	9.525	6.35	5.72	3.28	23.40	24.40	8.20	1.30	10.24	11.8/2653	0.87
08BSS-2	12.700	8.51	7.75	4.45	31.00	32.20	11.80	1.60	13.92	21.0/4721	1.40
10BSS-2	15.875	10.16	9.65	5.08	36.10	37.50	14.70	1.70	16.59	29.1/6542	1.96
12BSS-2	19.050	12.07	11.68	5.72	42.00	43.60	16.00	1.85	19.46	37.0/8318	2.46
16BSS-2	25.400	15.88	17.02	8.28	68.00	71.00	21.00	4.15/3.1	31.88	70.7/15894	5.42
20BSS-2	31.750	19.05	19.56	10.19	77.80	81.50	26.40	4.5/3.5	36.45	105.6/23740	7.87
24BSS-2	38.100	25.40	25.40	14.63	101.70	106.20	33.20	6.0/4.8	48.36	182.0/40915	12.43
28BSS-2	44.450	27.94	30.99	15.90	124.60	129.10	36.70	7.5/6.0	59.56	216.0/48557	16.60
32BSS-2	50.800	29.21	30.99	17.81	124.60	129.60	42.00	7.0/6.0	58.55	270.0/60698	20.34

1.1.8 STAINLESS STEEL CHAIN



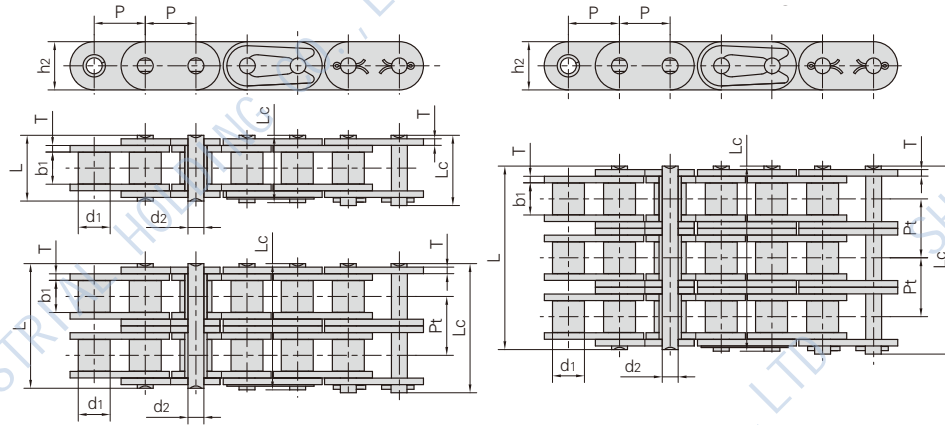
Chain No.	Pitch	Roller Diameter	Width Between Inner Plates	Pin Diameter	Pin Length		Inner Plate Depth	Plate Thickness	Transverse Pitch	Breaking Load	Weight Per Meter
	P	d1 (max)	b1 (min)	d2 (max)	L (max)	Lc (max)	h2 (max)	t/T (max)	Pt	Q	q
	mm	mm	mm	mm	mm	mm	mm	Mm	mm	kN/lbf	Kg/m
*04CSS-3	6.350	3.30	3.18	2.31	21.00	21.50	6.00	0.80	6.40	7.5/1686	0.44
*06CSS-3	9.525	5.08	4.77	3.58	32.70	33.50	9.00	1.30	10.13	16.5/3709	1.04
08ASS-3	12.700	7.95	7.85	3.96	45.40	46.60	12.00	1.50	14.38	28.8/6474	1.97
10ASS-3	15.875	10.16	9.40	5.08	57.00	58.50	15.09	2.03	18.11	45.6/1025	3.24
12ASS-3	19.050	11.91	12.57	5.94	71.50	73.30	18.00	2.42	22.78	65.1/14635	4.54
16ASS-3	25.400	15.88	15.75	7.92	91.70	95.10	24.00	3.25	29.29	116.7/26235	7.89
20ASS-3	31.750	19.05	18.90	9.53	112.20	116.30	30.00	4.00	35.76	180.0/40466	11.76
24ASS-3	38.100	22.23	25.22	11.10	141.40	145.20	35.70	4.80	45.44	225.0/50580	17.53
28ASS-3	44.450	25.40	25.22	12.70	152.20	156.80	41.0	5.60	48.87	306.0/68789	22.20
32ASS-3	50.800	28.58	31.55	14.27	181.80	186.60	47.80	6.40	58.55	401.4/90238	30.02
05BSS-3	8.000	5.00	3.00	2.31	19.50	20.20	7.10	0.80	5.64	8.8/1978	0.57
*06BSS-3	9.525	6.35	5.72	3.28	33.50	34.60	8.20	1.30	10.24	17.3/3889	1.09
08BSS-3	12.700	8.51	7.75	4.45	45.10	46.10	11.80	1.60	13.92	30.0/6744	2.08
10BSS-3	15.875	10.16	9.65	5.08	52.70	54.10	14.70	1.70	16.59	43.6/9802	2.92
12BSS-3	19.050	12.07	11.68	5.72	61.50	63.10	16.00	1.85	19.46	55.5/12477	3.71
16BSS-3	25.400	15.88	17.02	8.28	99.80	102.90	21.00	4.15/3.1	31.88	106.7/23830	8.13
20BSS-3	31.750	19.05	19.56	10.19	114.20	117.90	26.40	4.5/3.5	36.45	155.3/34913	11.80
24BSS-3	38.100	25.40	25.40	14.63	150.10	154.60	33.20	6.0/4.8	48.36	276.3/62115	20.10
28BSS-3	44.450	27.94	30.99	15.90	184.20	188.70	36.70	7.5/6.0	59.56	318.0/71486	26.90
32BSS-3	50.800	29.21	30.99	17.81	183.20	188.20	42.00	7.0/6.0	58.55	402.0/90370	31.56

1.1.8 STAINLESS STEEL CHAIN



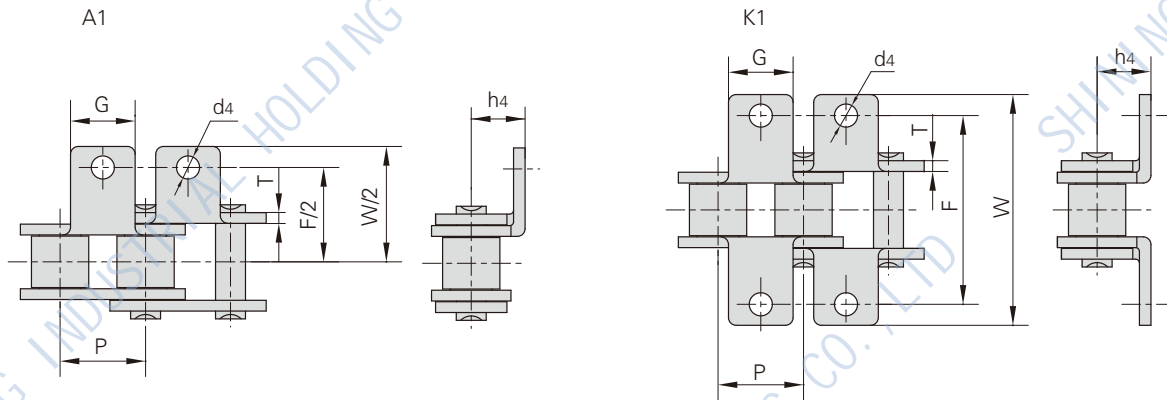
Chain No.	Pitch	Roller Diameter	Width Between Inner Plates	Pin Diameter	Pin Length		Inner Plate Depth	Plate Thickness	Transverse Pitch	Breaking Load	Weight Per Meter
	P	d1 (max)	b1 (min)	d2 (max)	L (max)	Lc (max)	h2 (max)	t/T (max)	Pt	Q	q
	mm	mm	mm	mm	mm	mm	mm	Mm	mm	kN/lbf	Kg/m
C08ASS-1	12.700	7.95	7.85	3.96	16.60	17.80	12.00	1.50	-	9.6/2158	0.75
C10ASS-1	15.875	10.16	9.40	5.08	20.70	22.20	15.09	2.03	-	15.2/3417	1.21
C12ASS-1	19.050	11.91	12.57	5.94	25.90	27.70	18.00	2.42	-	21.7/4878	1.79
C16ASS-1	25.400	15.88	15.75	7.92	32.70	36.50	24.00	3.25	-	38.9/8745	3.09
C20ASS-1	31.750	19.05	18.90	9.53	40.40	44.70	30.00	4.00	-	60.0/13489	4.55
C24ASS-1	38.100	22.23	25.22	11.10	50.30	54.30	35.70	4.80	-	75.0/16861	6.86
C28ASS-1	44.450	25.40	25.22	12.70	54.40	59.00	41.00	5.60	-	102.0/22931	8.49
C32ASS-1	50.800	28.58	31.55	14.27	64.80	69.60	47.80	6.40	-	133.8/30079	11.50
C08ASS-2	12.700	7.95	7.85	3.96	31.00	32.20	12.00	1.50	14.38	19.2/4316	1.50
C10ASS-2	15.875	10.16	9.40	5.08	38.90	40.40	15.09	2.03	18.11	30.4/6834	2.40
C12ASS-2	19.050	11.91	12.57	5.94	48.80	50.50	18.00	2.42	22.78	43.4/9757	3.62
C16ASS-2	25.400	15.88	15.75	7.92	62.70	65.80	24.00	3.25	29.29	77.8/17490	6.12
C20ASS-2	31.750	19.05	18.90	9.53	76.40	80.50	30.00	4.00	35.76	120.0/26977	9.10
C24ASS-2	38.100	22.23	25.22	11.10	95.80	99.70	35.70	4.80	45.44	150.0/33721	13.60
C28ASS-2	44.450	25.40	25.22	12.70	103.30	107.90	41.00	4.60	48.87	204.0/45861	16.86
C32ASS-2	50.800	28.58	31.55	14.27	123.30	128.10	47.80	6.40	58.55	267.6/60159	22.90
C08ASS-3	12.700	7.95	7.85	3.96	45.40	46.60	12.00	1.50	14.38	28.8/6474	2.30
C10ASS-3	15.875	10.16	9.40	5.08	57.00	58.50	15.09	2.03	18.11	45.6/10251	3.30
C12ASS-3	19.050	11.91	12.57	5.94	71.50	73.30	18.00	2.42	22.78	65.1/14635	5.40
C16ASS-3	25.400	15.88	15.75	7.92	91.70	95.10	24.00	3.25	29.29	116.7/26235	9.10
C20ASS-3	31.750	19.05	18.90	9.53	112.20	116.30	30.00	4.00	35.76	180.0/40466	13.56
C24ASS-3	38.100	22.23	25.22	11.10	141.40	145.20	35.70	4.80	45.44	225.0/50580	20.43
C28ASS-3	44.450	25.40	25.22	12.70	152.20	156.80	41.00	5.60	48.87	306.0/68789	25.23
C32ASS-3	50.800	28.58	31.55	14.27	181.80	186.60	47.80	6.40	58.55	401.4/90238	34.12

1.1.8 STAINLESS STEEL CHAIN



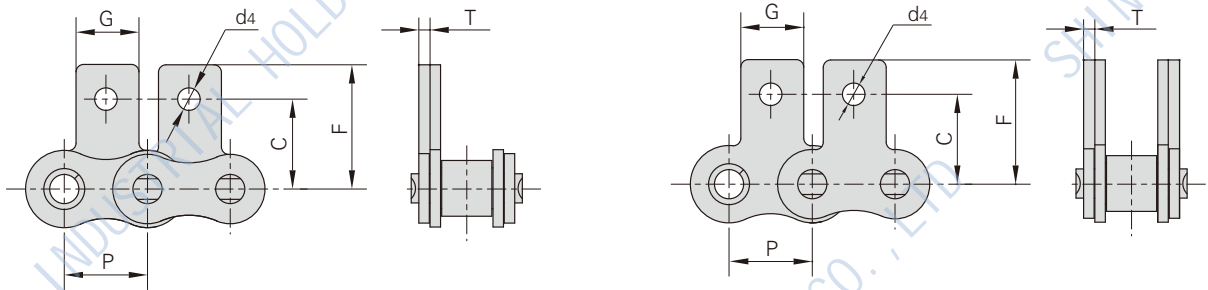
Chain No.	Pitch	Roller Diameter	Width Between Inner Plates	Pin Diameter	Pin Length		Inner Plate Depth	Plate Thickness	Transverse Pitch	Breaking Load	Weight Per Meter
	P	d1 (max)	b1 (min)	d2 (max)	L (max)	Lc (max)	h2 (max)	t/T (max)	Pt	Q	q
	mm	mm	mm	mm	mm	mm	mm	Mm	mm	kN/lbf	Kg/m
C08BSS-1	12.700	8.51	7.75	4.45	16.70	18.20	11.80	1.60	-	12.0/2698	0.80
C10BSS-1	15.875	10.16	9.65	5.08	19.50	20.90	14.70	1.70	-	14.5/3260	1.07
C12BSS-1	19.050	12.07	11.68	5.72	22.50	24.20	16.00	1.85	-	18.5/4159	1.32
C16BSS-1	25.400	15.88	17.02	8.28	36.10	39.10	21.00	4.15/3.10	-	40.0/8992	2.92
C20BSS-1	31.750	19.05	19.56	10.19	41.30	45.00	26.40	4.50/3.50	-	59.0/13264	4.41
C24BSS-1	38.100	25.40	25.40	14.63	53.40	57.80	33.20	6.00/4.80	-	104.0/23380	7.47
C28BSS-1	44.450	27.94	30.99	15.90	65.10	69.50	36.70	7.50/6.00	-	120.0/26976	9.90
C32BSS-1	50.800	29.21	30.99	17.81	66.00	71.00	42.00	7.00/6.00	-	150.0/33720	10.45
C08BSS-2	12.700	8.51	7.75	4.45	31.00	32.20	11.80	1.60	13.92	21.0/4721	1.58
C10BSS-2	15.875	10.16	9.65	5.08	36.10	37.50	14.70	1.70	16.59	29.1/16542	2.49
C12BSS-2	19.050	12.07	11.68	5.72	42.00	43.60	16.00	1.85	19.46	37.0/8318	2.62
C16BSS-2	25.400	15.88	17.02	8.28	68.00	71.00	21.00	4.15/3.10	31.88	70.7/15894	5.76
C20BSS-2	31.750	19.05	19.56	10.19	77.80	81.50	26.40	4.50/3.50	36.45	105.6/23740	8.72
C24BSS-2	38.100	25.40	25.40	14.63	101.70	106.20	32.20	6.00/4.80	48.36	182.0/40915	14.98
C28BSS-2	44.450	27.94	30.99	15.90	124.60	129.10	36.70	7.50/6.00	59.56	216.0/48557	19.82
C32BSS-2	50.800	29.21	30.99	17.81	124.60	129.60	42.00	7.00/6.00	58.55	270.0/60696	20.94
C08BSS-3	12.700	8.51	7.75	4.45	45.1	46.10	11.80	1.60	13.92	30.0/6744	2.36
C10BSS-3	15.875	10.16	9.65	5.08	52.70	54.10	14.70	1.70	16.59	43.6/9802	2.92
C12BSS-3	19.050	12.07	11.68	5.72	61.50	63.10	16.00	1.85	19.46	55.5/12477	3.89
C16BSS-3	25.400	15.88	17.02	8.28	99.80	102.90	21.00	4.15/3.10	31.88	106.7/23830	8.62
C20BSS-3	31.750	19.05	19.56	10.19	114.20	117.90	26.40	4.50/3.50	36.45	155.3/34913	13.03
C24BSS-3	38.100	25.40	25.40	14.63	150.10	154.60	33.20	6.00/4.80	48.36	276.3/62115	22.10
C28BSS-3	44.450	27.94	30.99	15.90	184.20	188.70	36.70	7.50/6.00	59.56	318.0/71486	29.64
C32BSS-3	50.800	29.21	30.99	17.81	183.20	188.20	42.00	7.00/6.00	58.55	402.0/90370	31.27

1.1.8 STAINLESS STEEL CHAIN



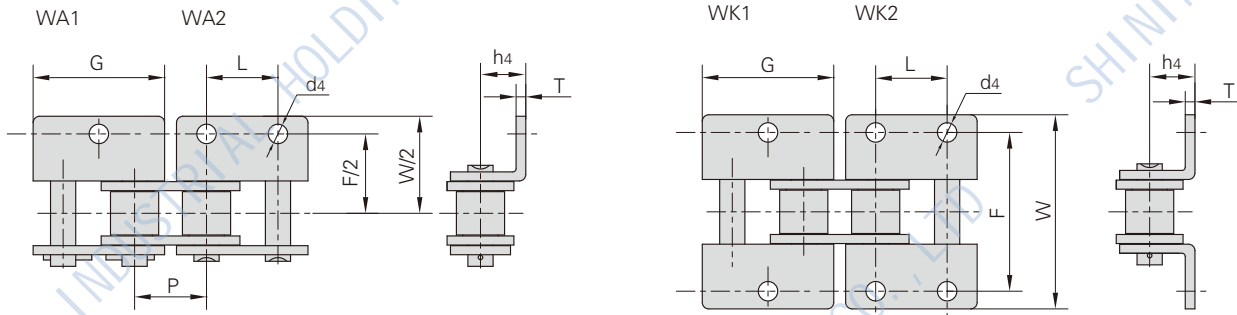
Chain No.	P	G	F	W	T	h4	d4
	mm	mm	mm	mm	mm	mm	mm
06CSS	9.525	7.90	19.00	28.60	1.30	6.35	3.40
08ASS	12.700	9.50	25.40	35.20	1.50	7.90	3.40
10ASS	15.875	12.70	31.75	46.20	2.03	10.30	5.50
12ASS	19.050	15.90	38.10	55.60	2.42	11.90	5.50
16ASS	25.400	19.10	50.80	64.80	3.25	15.90	6.80
20ASS	31.750	25.40	63.50	89.80	4.00	19.80	9.20
24ASS	38.100	28.60	76.20	108.50	4.80	23.00	9.80
28ASS	44.450	34.90	88.90	123.00	5.60	28.60	11.40
32ASS	50.800	38.10	101.60	142.80	6.40	31.75	13.10
#06BSS	9.525	8.00	19.04	27.00	1.30	6.50	3.50
08BSS	12.700	9.50	25.40	36.40	1.60	8.90	4.50
10BSS	15.875	14.30	31.75	44.60	1.70	10.31	5.30
12BSS	19.050	16.00	38.10	52.40	1.85	13.46	6.40
16BSS	25.400	19.10	50.80	72.60	3.10	15.88	6.40
20BSS	31.750	35.00	63.50	100.50	3.50	19.80	9.00
24BSS	38.100	30.00	76.20	108.40	4.80	26.67	10.50
28BSS	44.450	35.00	88.90	123.00	6.00	28.58	13.10
32BSS	50.800	38.10	101.60	142.80	6.00	31.75	13.10

1.1.8 STAINLESS STEEL CHAIN



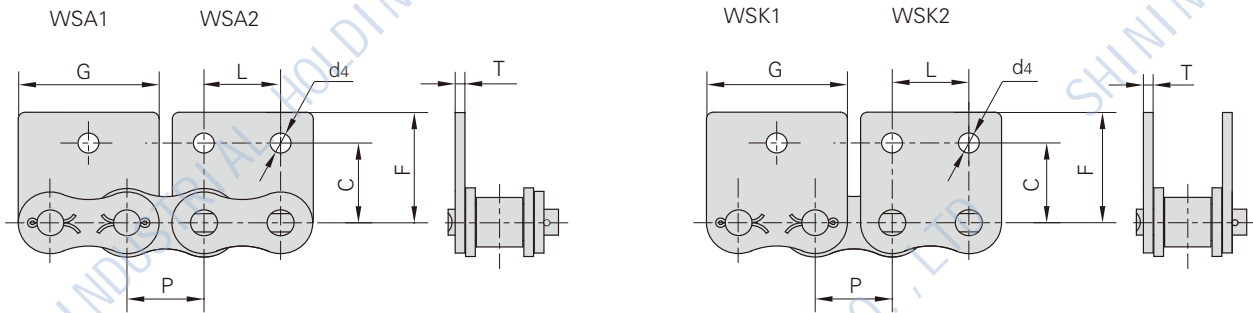
Chain No.	P	G	C	F	T	d4
	mm	mm	mm	mm	mm	mm
06CSS	9.525	7.90	9.50	14.55	1.30	3.40
08ASS	12.700	9.50	12.70	19.05	1.50	3.40
10ASS	15.875	12.70	15.90	25.25	2.03	5.50
12ASS	19.050	15.90	18.30	29.33	2.42	5.50
16ASS	25.400	19.10	24.60	34.70	3.25	6.80
20ASS	31.750	25.40	31.80	43.30	4.00	9.20
24ASS	38.100	28.60	36.50	51.60	4.80	9.80
28ASS	44.450	34.90	44.50	62.00	5.60	11.40
32ASS	50.800	38.10	50.80	69.85	6.40	13.10
#06BSS	9.525	8.00	9.52	13.50	1.30	3.50
08BSS	12.700	9.50	13.35	18.90	1.60	4.50
10BSS	15.875	14.30	16.50	22.95	1.70	5.30
12BSS	19.050	16.00	21.45	28.60	1.85	6.40
16BSS	25.400	19.10	23.15	34.00	3.10	6.40
20BSS	31.750	35.00	30.50	45.70	3.50	9.00
24BSS	38.100	30.00	36.00	63.50	4.80	10.50

1.1.8 STAINLESS STEEL CHAIN



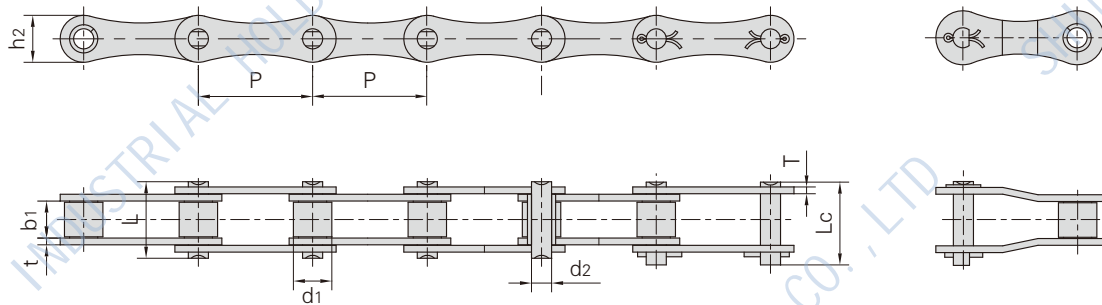
Chain No.	P	G	L	F	W	T	h4	d4
	mm	mm	mm	mm	mm	mm	mm	mm
06CSS	9.525	17.20	9.525	19.00	28.60	1.30	6.35	2.80
08ASS	12.700	23.00	12.700	25.40	35.60	1.50	7.90	3.40
10ASS	15.875	28.80	15.875	31.75	46.80	2.03	10.30	5.50
12ASS	19.050	34.65	19.050	38.10	56.40	2.42	11.90	5.50
16ASS	25.400	45.90	25.400	50.80	73.20	3.25	15.90	6.80
20ASS	31.750	57.65	31.750	63.50	89.80	4.00	19.80	9.20
24ASS	38.100	69.30	38.100	76.20	108.80	4.80	23.00	9.80
28ASS	44.450	80.45	44.450	88.90	123.00	5.60	28.60	11.40
32ASS	50.800	92.00	50.800	101.60	142.80	6.40	31.75	13.10
#06BSS	9.525	17.72	9.525	19.04	27.00	1.30	6.50	3.50
08BSS	12.700	24.00	12.700	25.40	36.40	1.60	8.90	4.30
10BSS	15.875	29.58	15.850	31.80	44.60	1.70	10.31	5.30
12BSS	19.050	34.05	19.050	38.10	52.40	1.85	13.46	6.40
16BSS	25.400	46.40	25.40	50.80	72.60	3.10	15.88	6.40
20BSS	31.750	58.1	31.750	63.00	100.50	3.50	19.80	9.00
24BSS	38.100	71.30	38.10	76.20	108.40	4.80	26.67	10.50
28BSS	44.450	81.10	44.450	88.90	123.00	6.00	28.58	13.10
32BSS	50.800	92.80	50.800	101.60	142.80	6.00	31.75	13.10

1.1.8 STAINLESS STEEL CHAIN



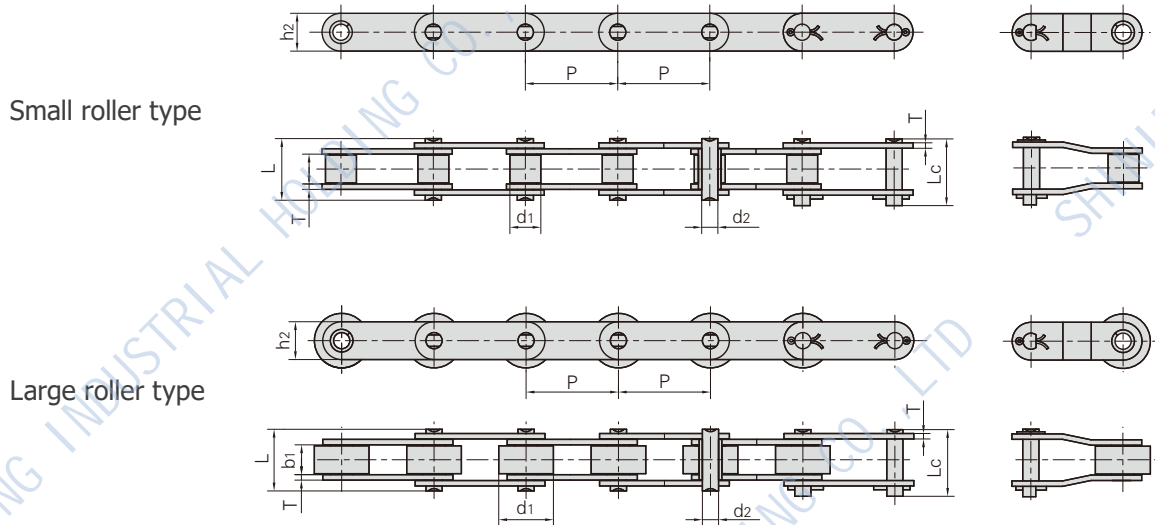
Chain No.	P	G	L	C	F	T	d4
	mm	mm	mm	mm	mm	mm	mm
06CSS	9.525	17.32	9.525	9.50	14.55	1.30	2.80
08ASS	12.700	23.00	12.700	12.70	17.40	1.50	3.40
10ASS	15.875	28.80	15.875	15.90	23.05	2.03	5.50
12ASS	19.050	34.65	19.050	18.30	26.86	2.42	5.50
16ASS	25.400	45.90	25.400	24.60	35.45	3.25	6.80
20ASS	31.750	57.65	31.750	31.80	44.00	4.00	9.20
24ASS	38.100	69.30	38.100	36.50	51.60	4.80	9.80
28ASS	44.450	80.45	44.450	44.50	62.00	5.60	11.40
32ASS	50.800	92.00	50.800	50.80	69.85	6.40	13.10
#06BSS	9.525	17.72	9.525	9.52	13.50	1.30	3.50
08BSS	12.700	23.30	12.700	13.35	18.90	1.60	4.30
10BSS	15.875	29.58	15.875	16.50	22.95	1.70	5.30
12BSS	19.050	34.05	19.050	21.45	28.60	1.85	6.40
16BSS	25.400	46.40	25.400	23.15	34.00	3.10	6.40
20BSS	31.750	58.10	31.750	30.50	45.70	3.50	9.00
24BSS	38.100	71.30	38.100	42.70	61.50	4.80	10.50

1.1.8 STAINLESS STEEL CHAIN



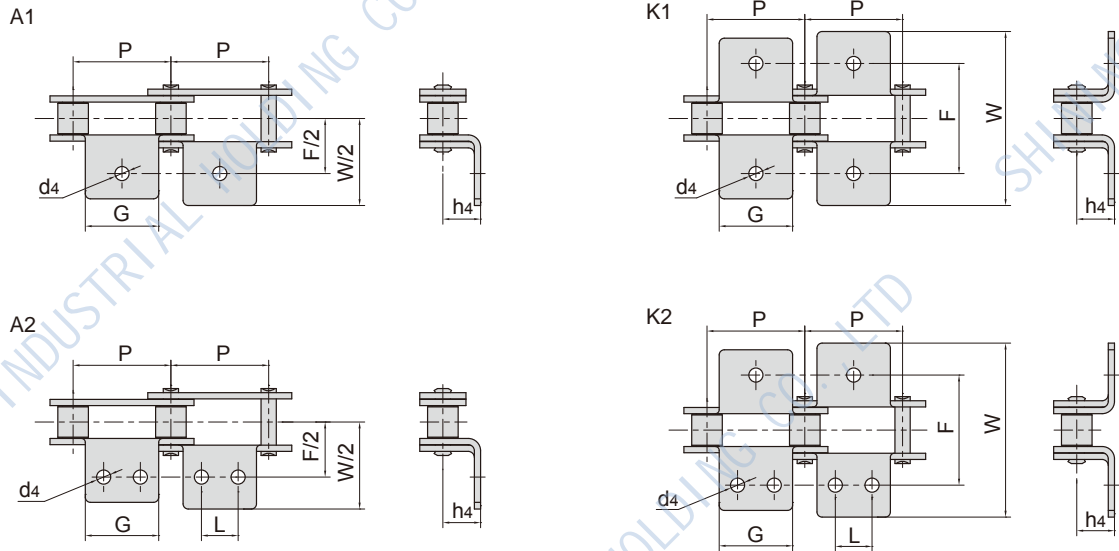
Chain No.	Pitch	Roller Diameter	Width Between Inner Plates	Pin Diameter	Pin Length		Inner Plate Depth	Plate Thickness	Breaking Load	Weight Per Meter
	P	d1 (max)	b1 (min)	d2 (max)	L (max)	Lc (max)	h2 (max)	t/T (max)	Q	q
	mm	mm	mm	mm	mm	mm	mm	Mm	kN/lbf	Kg/m
208ASS	25.40	7.95	7.85	3.96	16.60	17.80	12.00	1.50	9.6/2158	0.42
208BSS	25.40	8.51	7.75	4.45	16.70	18.20	11.80	1.60	12.0/2698	0.45
210ASS	31.75	10.16	9.40	5.08	20.70	22.20	15.00	2.03	15.2/3417	0.73
210BSS	31.75	10.16	9.65	5.08	19.50	20.90	14.70	1.70	13.3/2990	0.66
212ASS	38.10	11.91	12.57	5.94	25.90	27.70	18.00	2.42	21.7/1878	1.02
212BSS	38.10	12.07	11.68	5.72	22.50	25.20	16.00	1.85	18.5/4159	0.76
216ASS	50.80	15.88	15.75	7.92	32.70	36.50	24.00	3.25	38.9/8745	1.70
216BSS	50.80	15.88	17.02	8.28	36.10	39.10	21.00	4.50/3.10	40.0/8992	1.80
220ASS	63.50	19.05	18.90	9.53	40.40	44.70	30.00	4.00	60.0/13488	2.55
220BSS	63.50	19.05	19.56	10.19	41.30	45.00	26.40	4.50/3.50	57.0/12814	2.62
224ASS	76.20	22.23	25.22	11.10	50.30	54.30	35.70	4.80	76.2/17130	4.06
224BSS	76.20	25.40	25.40	14.63	53.40	57.80	33.20	6.00/4.80	104.0/23378	4.66

1.1.8 STAINLESS STEEL CHAIN



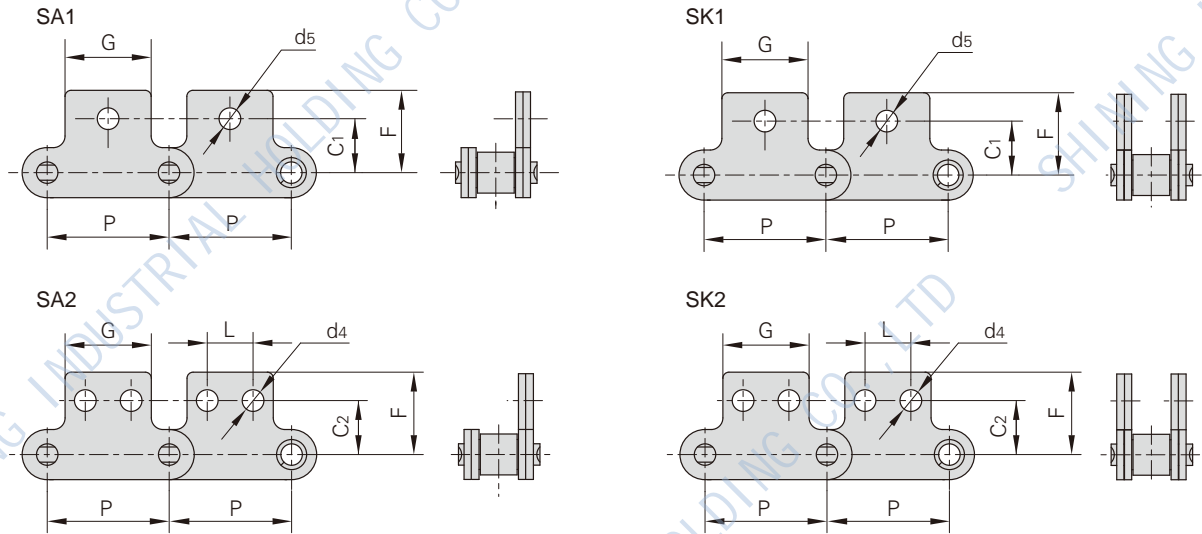
Chain No.	Pitch	Roller Diameter	Width Between Inner Plates	Pin Diameter	Pin Length		Inner Plate Depth	Plate Thickness	Breaking Load	Weight Per Meter
	P	d1 (max)	b1 (min)	d2 (max)	L (max)	Lc (max)	h2 (max)	T (max)	Q	q
	mm	mm	mm	mm	mm	mm	mm	mm	kN/lbf	Kg/m
C2040SS C2042SS	25.40	7.95 15.88	7.85	3.96	16.6	17.8	12.0	1.50	9.6/2182	0.51 0.85
C2040HSS	25.40	7.95	7.85	3.96	18.8	19.9	12.0	2.03	9.6/2182	0.66
C208BSS C208BLSS	25.40	8.51 15.88	7.75	4.45	16.7	18.2	11.8	1.60	12.0/2727	0.56 0.90
C2050SS C2052SS	31.75	10.16 19.05	9.40	5.08	20.7	22.2	15.0	2.03	15.2/3455	0.79 1.29
C210BSS	31.75	10.16	9.65	5.08	19.5	20.9	14.7	1.70	13.3/2990	0.75
C2060SS C2062SS	38.10	11.91 22.23	12.57	5.94	25.9	27.7	18.0	2.42	21.7/4932	1.13 1.63
C2060HSS C2062HSS	38.10	11.91 22.23	12.57	5.94	29.2	31.6	18.0	3.25	21.7/4932	1.46 2.10
C212BSS	38.10	12.07	11.68	5.72	22.5	25.2	16.0	1.85	18.5/4159	0.89
C2080SS C2082SS	50.80	15.88 28.58	15.75	7.92	32.7	36.5	24.0	3.25	38.9/8841	2.11 3.16
C2080HSS C2082HSS	50.80	15.88 28.58	15.75	7.92	36.2	39.4	24.0	4.00	38.9/8841	2.57 3.63
C216BSS	50.80	15.88	17.02	8.28	36.1	39.1	21.0	4.50/3.10	40.0/8992	2.10
C2100SS C2102SS	63.50	19.05 39.67	18.90	9.53	40.4	44.7	30.0	4.00	60.0/13636	3.05 4.89
C2100HSS C2102HSS	63.50	19.05 39.67	18.90	9.53	43.6	46.9	30.0	4.80	60.0/13636	3.61 5.45
C220BSS	63.50	19.05	19.56	10.19	41.3	45.0	26.4	4.50/3.50	57.0/12814	2.93

1.1.8 STAINLESS STEEL CHAIN



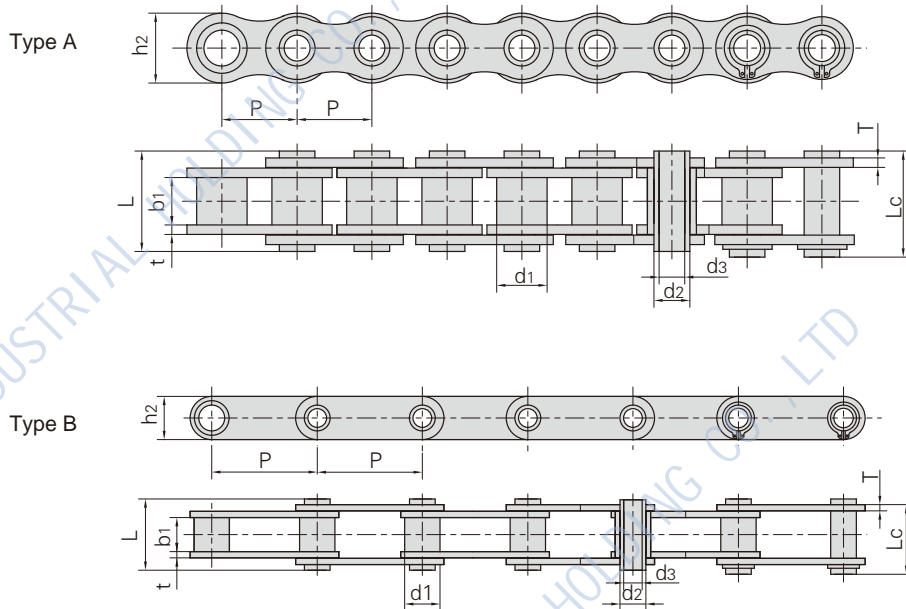
Chain No.	P	G	L	F	W	h4	d4
	mm	mm	mm	mm	mm	mm	mm
C2040SS C2042SS	25.40	19.1	9.5	25.4	39.6	9.10	3.4
C208BSS C208BLSS	25.40	32.2	12.7	25.4	39.6	9.10	4.5
C2050SS C2052SS	31.75	23.8	11.9	31.8	49.0	11.10	5.5
C2060SS C2062SS	38.10	28.6	14.3	42.9	67.8	14.70	5.5
C2060HSS C2062HSS	38.10	28.6	14.3	42.9	67.8	14.70	5.5
C2080SS C2082SS	50.80	38.1	19.1	55.6	87.8	19.10	6.8
C2080HSS C2082HSS	50.80	38.1	19.1	55.6	87.8	19.10	6.8
C2100SS C2102SS	63.50	47.6	23.8	66.6	107.5	23.40	9.2
C2100HSS C2102HSS	63.50	47.6	23.8	66.6	107.5	23.40	9.2

1.1.8 STAINLESS STEEL CHAIN



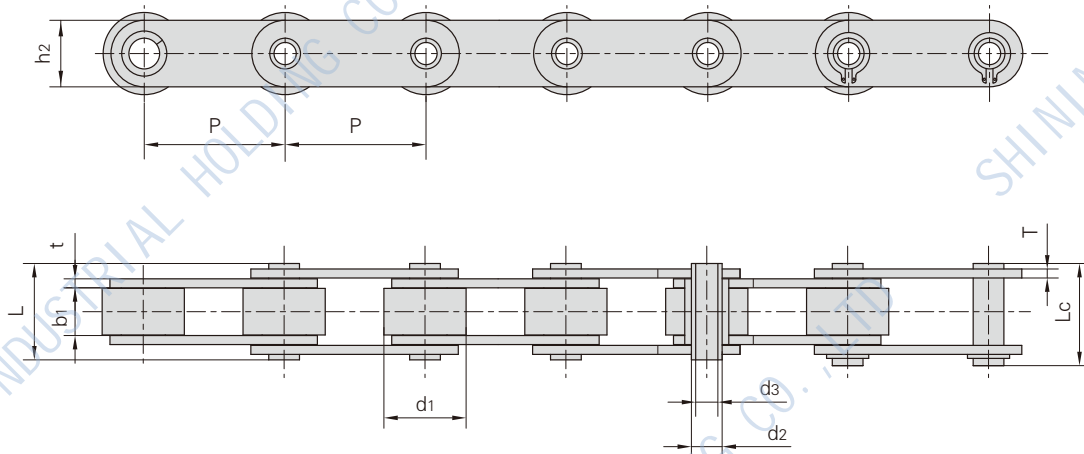
Chain No.	P	G	L	C1	C2	F	d4	d5
	mm	mm	mm	mm	mm	mm	mm	mm
C2040SS C2042SS	25.400	19.10	9.50	11.10	13.50	20.50	3.40	5.50
C208BSS C208BLSS	25.400	23.20	12.70	11.10	13.50	20.50	4.50	5.50
C2050SS C2052SS	31.750	23.80	11.90	14.30	15.90	25.00	5.50	6.60
C2060SS C2062SS	38.100	28.60	14.30	17.50	19.10	32.90	5.50	9.20
C2060HSS C2062HSS	38.100	28.60	14.30	17.50	19.10	32.90	5.50	9.20
C2080SS C2082SS	50.800	38.10	19.10	22.20	25.40	43.50	6.60	11.00
C2080HSS C2082HSS	50.800	38.10	19.10	22.20	25.40	43.50	6.60	11.00
C2100SS C2102SS	63.500	47.60	23.80	28.60	31.80	50.40	8.40	13.00
C2100HSS C2102HSS	63.500	47.60	23.80	28.60	31.80	50.40	8.40	13.00

1.1.8 STAINLESS STEEL CHAIN



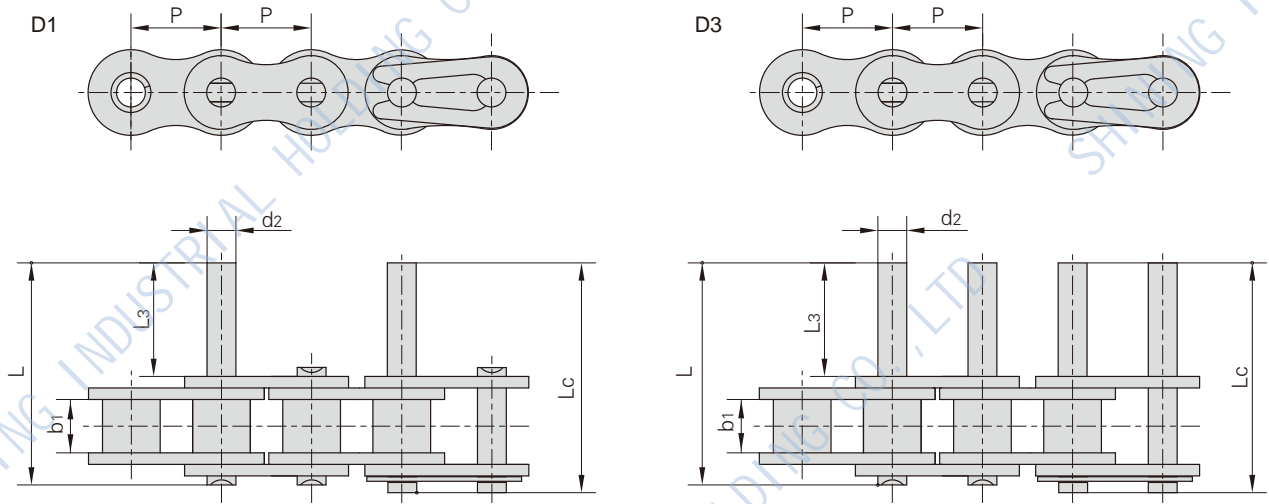
Chain No.	Pitch	Roller Diameter	Width Between Inner Plates	Pin Diameter		Pin Length		Inner Plate Depth	Plate Thickness	Breaking Load	Weight Per Meter
	P	d1 (max)	b1 (min)	d2 (max)	d3 (min)	L (max)	Lc (max)	h2 (max)	t/T (max)	Q	q
	mm	mm	mm	mm	mm	mm	mm	mm		kN/lbf	Kg/m
08BHPSS	12.700	8.51	7.75	6.55	4.50	16.40	-	11.80	1.60	7.7/1731	0.56
08BHPFSS	12.700	8.51	7.75	6.55	4.50	16.40	17.60	11.80	1.60/1.30	7.8/1753	0.50
08BHPF5SS	12.700	8.51	7.75	6.30	4.50	16.80	18.00	12.00	1.60	6.7/1506	0.63
C08BHPSS	12.700	8.51	7.75	6.55	4.50	16.40	17.60	11.80	1.60/1.30	7.7/1731	0.62
40HPSS	12.700	7.95	7.85	5.63	4.00	16.50	17.60	12.00	1.50	7.7/1731	0.55
50HPSS	15.875	10.16	9.40	7.03	5.13	20.70	21.90	15.09	2.03	14.0/3147	0.92
10BHPF3SS	15.875	10.16	9.65	7.02	5.13	19.05	20.50	14.70	1.70	7.0/1574	0.87
60HPSS	19.050	11.91	12.70	8.31	6.00	25.80	26.80	18.00	2.42	16.8/3777	1.31
60HPF6SS	19.050	11.91	12.70	8.31	5.00	25.80	26.80	18.00	2.42	15.0/3409	1.40
80HPSS	25.400	15.88	15.75	11.40	8.05	32.50	33.80	24.00	3.25	35.0/7868	2.29
C2040HPSS	25.400	7.95	7.85	5.63	4.00	16.50	17.60	12.00	1.50	7.7/1731	0.47
C2050HPSS	31.750	10.16	9.40	7.22	5.12	20.50	21.80	15.00	2.03	14.3/3215	0.77
C2060HPSS	38.100	11.91	12.70	8.31	6.00	25.80	26.80	17.00	2.42	16.8/3777	1.03
HP50F10SS	50.000	18.00	12.00	8.30	8.30	39.50	40.60	30.00	3.00	30.0/6744	2.71
C2080HPSS	50.800	15.88	15.75	11.40	8.05	32.50	33.80	24.00	3.25	35.0/7868	1.83

1.1.8 STAINLESS STEEL CHAIN



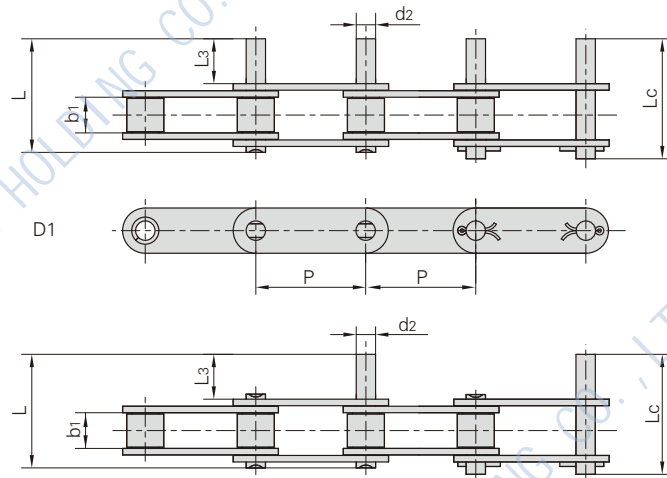
Chain No.	Pitch	Roller Diameter	Width Between Inner Plates	Pin Diameter		Pin Length		Inner Plate Depth	Plate Thickness	Breaking Load	Weight Per Meter
	P	d1 (max)	b1 (min)	d2 (max)	d3 (min)	L (max)	Lc (max)	h2 (max)	T (max)	Q	q
	mm	mm	mm	mm	mm	mm	mm	mm	mm	kN/lbf	Kg/m
C2042HPSS	25.400	15.88	7.85	5.63	4.00	16.50	17.60	12.00	1.50	7.7/1731	0.79
C2052HPSS	31.750	19.05	9.53	7.22	5.12	20.50	21.80	15.00	2.03	14.3/3215	1.27
C2062HPSS	38.100	22.23	12.70	8.31	6.00	25.80	26.80	17.00	2.42	16.8/3777	1.74
C2082HPSS	50.800	28.58	15.75	11.40	8.05	32.40	33.80	24.00	3.25	35.0/7868	2.86
C2042H-HPSS	25.400	15.88	7.85	5.63	4.00	18.80	19.90	12.00	2.03	7.7/1731	0.96
C2052H-HPSS	31.750	19.05	9.53	7.22	5.12	22.10	23.40	15.00	2.42	14.3/3215	1.46
C2062H-HPSS	38.100	22.23	12.70	8.31	6.00	29.20	30.20	17.00	3.25	16.8/3777	2.02
C2082H-HPSS	50.800	28.58	15.75	11.40	8.05	36.20	37.60	24.00	4.00	35.0/7868	3.30
HB25.4F2SS	25.400	15.89	17.26	9.00	6.35	31.30	32.50	20.00	2.50	24.0/5395	1.99
HB30SS	30.000	20.00	14.70	9.00	6.30	29.00	31.00	20.00	2.50	18.0/4046	2.23
HB45SS	45.000	28.00	17.75	10.00	6.00	34.50	36.60	25.40	3.00	35.0/7868	3.60
HB50F3SS	50.000	25.00	11.50	9.00	6.00	25.00	26.50	20.00	2.50	21.0/4721	1.24
HB50F5SS	50.000	28.00	17.75	10.00	6.00	34.50	36.60	25.00	3.00	35.0/7868	3.43
HB50F6SS	50.000	20.00	17.75	10.00	6.00	34.50	36.60	25.00	3.00	35.0/7868	2.51
C10BHCSS	15.875	10.16	9.65	5.94	4.04	19.30	20.50	14.70	1.70	10.0/2248	0.99
C60HBF4SS	19.080	11.91	12.70	7.00	4.00	25.50	36.60	18.00	2.42	15.0/3372	1.70
MC35SS-P-50	50.000	31.00	14.80	14.00	10.20	31.00	33.00	25.00	3.00	21.0/4721	2.90
DH4203HPSS	76.200	31.75	15.00	14.00	10.10	25.00	39.00	26.00	3.80	29.4/6609	3.05

1.1.8 STAINLESS STEEL CHAIN



Chain No.	P	b1	d2	L3	L	Lc
	mm	mm	mm	mm	mm	mm
06CSS	9.525	4.77	3.58	9.5	20.8	21.6
08ASS	12.700	7.85	3.96	9.5	25.1	26.2
10ASS	15.875	9.40	5.08	11.9	31.3	33.1
12ASS	19.050	12.57	5.94	14.3	38.6	40.6
16ASS	25.400	15.75	7.92	19.1	50.3	53.3
20ASS	31.750	18.90	9.53	23.8	61.8	66.1
24ASS	38.100	25.22	11.10	28.6	76.4	80.4
28ASS	44.450	25.22	12.70	33.3	84.8	89.4
32ASS	50.800	31.55	14.27	38.1	99.6	104.4
08BSS	12.700	7.75	4.45	9.5	25.1	26.6
10BSS	15.875	9.65	5.08	11.9	30.1	31.5
12BSS	19.050	11.68	5.72	14.3	35.4	37.1
16BSS	25.400	17.02	8.28	19.1	53.0	54.3
20BSS	31.750	19.56	10.19	41.0	79.9	83.6
24BSS	38.100	25.40	14.63	50.7	101.4	105.8
28BSS	44.450	30.99	15.90	61.9	124.0	128.4
32BSS	50.800	30.99	17.81	64.8	126.8	131.8

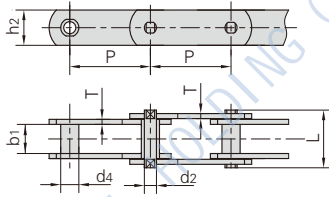
1.1.8 STAINLESS STEEL CHAIN



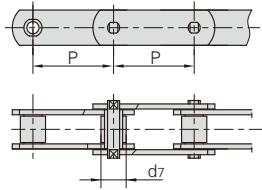
Chain No.	P	b1	d2	L3	L	Lc
	mm	mm	mm	mm	mm	mm
C2040SS C2042SS	25.40	7.85	3.96	9.5	25.1	26.2
C2050SS C2052SS	31.75	9.40	5.08	11.9	31.3	33.1
C2060SS C2062SS	38.10	12.57	5.94	14.3	38.6	40.6
C2060HSS C2062HSS	38.10	12.57	5.94	14.3	42.0	42.8
C2080SS C2082SS	50.80	15.75	7.92	19.1	50.3	53.3
C2080HSS C2082HSS	50.80	15.75	7.92	19.1	53.5	55.0
C2100SS C2102SS	63.50	18.90	9.53	23.8	61.8	66.1
C2100HSS C2102HSS	63.50	18.90	9.53	23.8	65.0	68.3
C2120HSS C2122HSS	76.20	25.22	11.10	28.6	79.6	83.6
C2160HSS C2162HSS	101.60	31.75	14.27	38.1	103.0	107.8

1.1.8 STAINLESS STEEL CHAIN

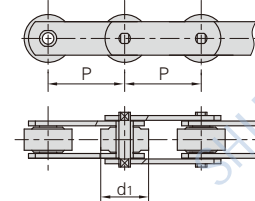
1.without rollers



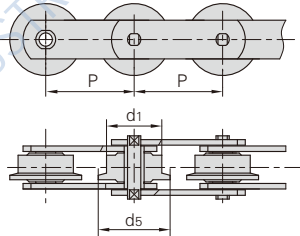
2.with S small rollers type



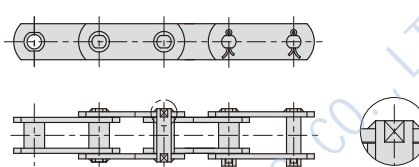
3.with P large rollers type



4.with F flanged rollers type



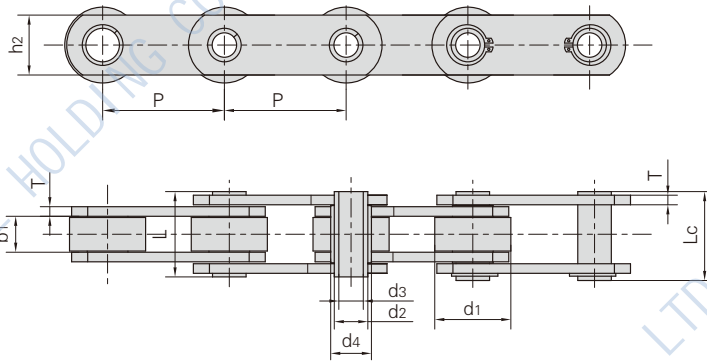
5.Welded pins with Plates



Chain No.	Pitch							Roller Diameter			Bush Diameter
	P							d1 (max)	d7 (max)	d5 (max)	d4 (max)
	mm							mm	mm	mm	mm
M20SS	40.0	50.0	63.0	80.0	100.0	125.0	160.0	25.00	12.50	30.00	9.00
M28SS	50.0	63.0	80.0	100.0	125.0	160.0	-	30.00	15.00	36.00	10.00
M40SS	63.0	80.0	100.0	125.0	160.0	-	-	36.00	18.00	42.00	12.50
M56SS	63.0	80.0	100.0	125.0	160.0	-	-	42.00	21.00	50.00	15.00
M80SS	80.0	100.0	125.0	160.0	-	-	-	50.00	25.00	60.00	18.00
M112SS	80.0	100.0	125.0	160.0	-	-	-	60.00	30.00	70.00	21.00
M160SS	100.0	125.0	160.0	-	-	-	-	70.00	36.00	85.00	25.00

Chain No.	Width Between Inner Plates	Pin Diameter	Pin Length	Plate Depth	Plate Thickness	Tensile Strength
	b1 (min)	d2 (max)	L (max)	h2 (max)	t/T (max)	Q (min)
	mm	mm	mm	mm	mm	kN/lbf
M20SS	16.00	6.00	35.00	18.00	2.50	20.0/4545
M28SS	18.00	7.00	40.00	20.00	3.00	28.0/6364
M40SS	20.00	8.50	45.00	25.00	3.50	40.0/9091
M56SS	24.00	10.00	52.00	30.00	4.00	56.0/12727
M80SS	28.00	12.00	62.00	35.00	5.00	80.0/18182
M112SS	32.00	15.00	73.00	40.00	6.00	12.0/25454
M160SS	37.00	18.00	85.00	50.00	7.00	160.0/36364

1.1.8 STAINLESS STEEL CHAIN

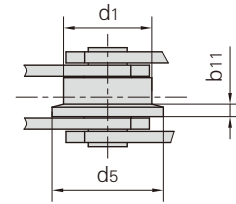
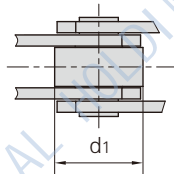
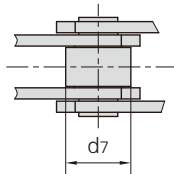
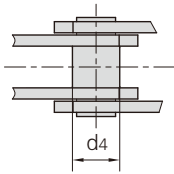


without rollers

with S small rollers type

with P large rollers type

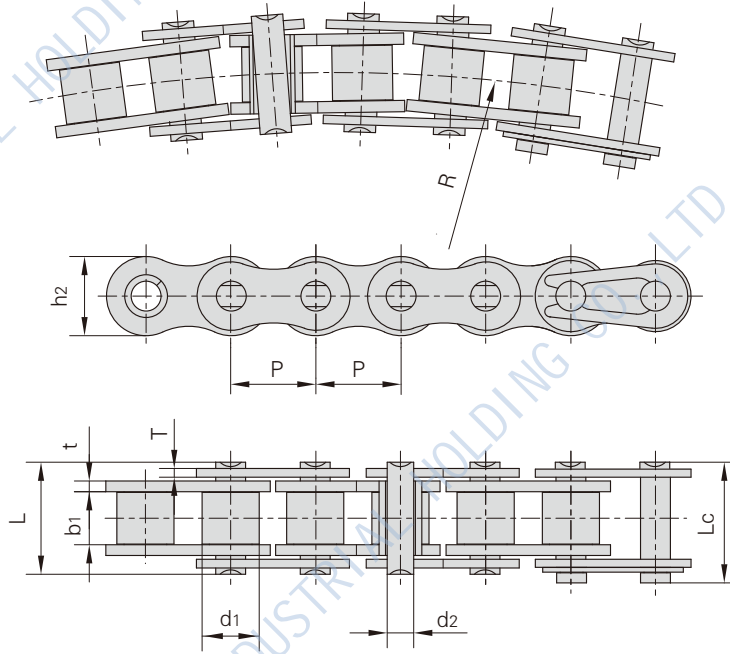
with F flanged rollers type



Chain No.	Pitch					Roller Diameter				Bush Diameter	
	P					d1 (max)	d7 (max)	d5 (max)	b11	d5 (max)	d4 (max)
	mm							mm	mm	mm	mm
MC28SS	63.0	80.0	100.0	125.0	160.0	36.0	25.0	45.0	4.5	17.5	2.5
MC56SS	80.0	100.0	125.0	160.0	200.0	50.0	30.0	60.0	5.0	21.0	35.0
MC112SS	100.0	125.0	160.0	200.0	-	70.0	42.0	85.0	7.0	29.0	50.0
MC224SS	160.0	200.0	-	-	-	100.0	60.0	120.0	10.0	41.0	70.0

Chain No.	Width Between Inner Plates	Pin Diameter		Pin Length		Plate Thickness	Tensile Strength
	b1 (min)	d2 (max)	d3 (min)	L (max)	Lc (max)	t/T (max)	Q (min)
	mm	mm	mm	mm	mm	mm	kN/lbf
MC28SS	20.0	13.0	8.2	36.0	38.5	3.5	28.0/6364
MC56SS	24.0	15.5	10.2	45.0	47.5	4.0	56.0/12727
MC112SS	32.0	22.0	14.3	62.5	64.3	6.0	112.0/25454
MC224SS	43.0	31.0	20.3	83.0	85.5	8.0	224.0/50909

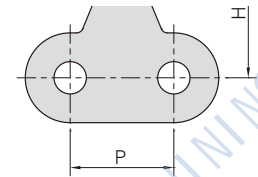
1.1.8 STAINLESS STEEL CHAIN



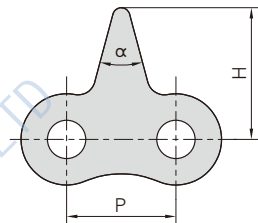
Chain No.	Pitch	Roller Diameter	Width Between Inner Plates	Pin Diameter	Pin Length		Inner Plate Depth	Plate Thickness	Side Bow Radius	Breaking Load	Weight Per Meter
	P	d1 (max)	b1 (min)	d2 (max)	L (max)	Lc (max)	h2 (max)	t/T (max)	R	Q	q
	mm	mm	mm	mm	mm	mm	mm	mm	mm	kN/lbf	Kg/m
40SBSS	12.700	7.95	7.85	3.96	16.9	18.1	11.7	1.50	350	7/1574	0.63
43SBSS	12.700	7.95	7.85	3.45	18.5	-	11.7	1.50	305	7/1574	0.65
50SSSB	15.875	10.16	9.40	4.37	20.7	22.7	15.1	2.03	400	12.4/2788	1.10
16BSBSS	25.400	15.88	17.22	7.90	36.5	39.7	21.0	3.70/3.00	500	12.5/2810	2.53

1.1.8 STAINLESS STEEL CHAIN

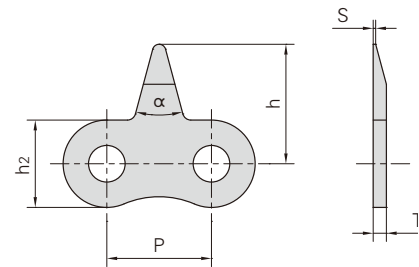
Chain No.	P	H	a
	mm	mm	
08AF9SS	12.70	17.00	45°



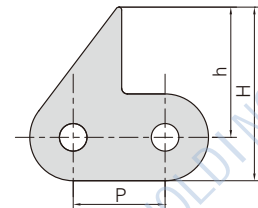
Chain No.	P	H (max)	h
	mm	mm	mm
16AF44SS	25.40	30.30	50.00



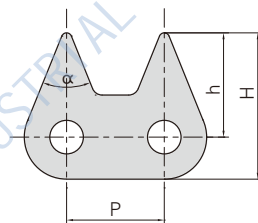
Chain No.	P	h2 (max)	h	T	s	a
	mm	mm	mm	mm	mm	
08BF30SS-1STA	12.70	10.60	14.50	1.60	0.30	30°



Chain No.	P	H (max)	h
	mm	mm	mm
C20ASS-1STCF1	31.75	60.00	45.00



Chain No.	P	H (max)	h	a
	mm	mm	mm	
06BSS-2STC	9.525	14.30	10.20	44°



Chain No.	P	H (max)	h
	mm	mm	mm
08BSS-941	12.70	15.80	10.30

