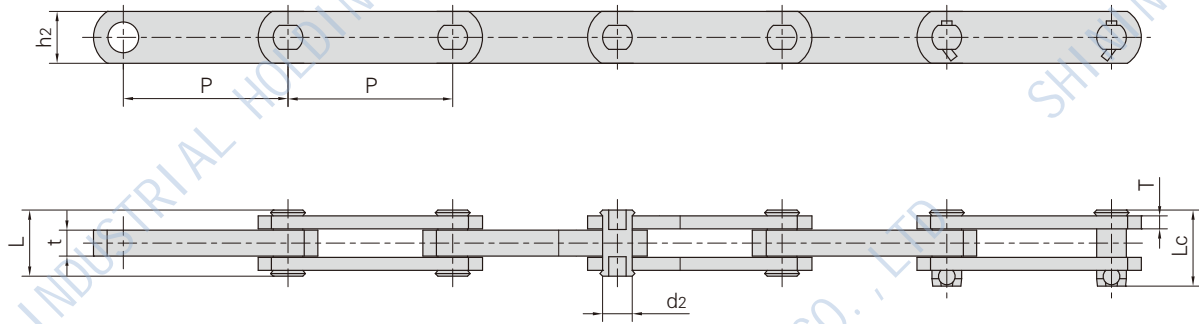
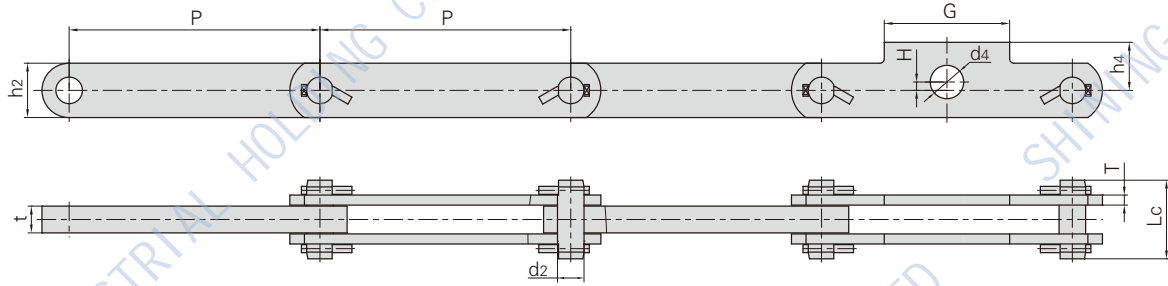


1.1.14 BLOCK CHAIN

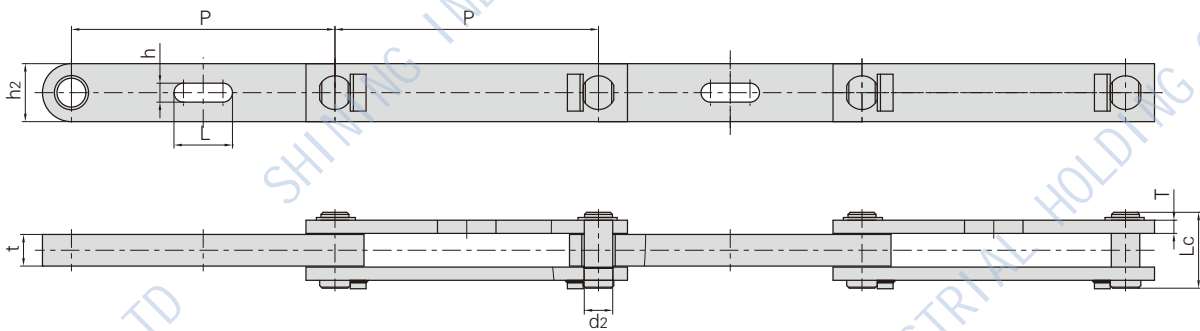


Chain No.	Pitch	Pin Diameter	Pin Length		Plate Depth	Plate Thickness	Tensile Strength	Average Tensile Strength	Weight Per Meter
	P	d2 (max)	L (max)	Lc (max)	h2 (max)	t/T (max)	Q (min)	Qo	q
	mm	mm	mm	mm	mm	mm	kN/lbf	kN	Kg/m
BP41.3	41.3	7.94	29.4	-	15.9	15.9/6.4	45.0/10116	50.0	2.30
P100F113	100.0	12.00	30.5	36.0	30.0	12.0/6.0	100.0/22480	110.0	3.59
P127F4	127.0	22.86	51.5	-	40.0	20.0/10.0	170.0/38217	187.0	11.60
BP127F1	127.0	20.00	50.0	57.5	40.0	20.0/10.0	280.0/62946	308.0	7.90
BP127F3	127.0	22.00	47.5	76.0	40.0	20.0/9.5	240.0/53954	276.0	8.04
BP127F4	127.0	32.00	71.0	-	65.0	35.0/12.0	550.0/123645	632.5	22.83
BP150	150.0	32.00	78.0	86.0	65.0	32.0/16.0	637.0/143203	700.0	21.10
BP200F1	200.0	22.12	60.0	-	44.5	30.0/9.5	276.4/62137	304.0	10.23
BP200F2	200.0	26.45	66.0	-	55.0	28.0/12.7	534.9/120250	588.0	14.10
BP200F3	200.0	22.12	60.0	-	50.8	30.0/9.5	401.2/90193	441.0	11.80
BP200F6	200.0	25.40	62.5	-	50.8	24.8/12.7	356.0/80032	409.4	13.50
BP250F1	250.0	26.45	72.0	-	55.0	32.0/12.7	543.9/120250	588.0	14.60
BP250F2	250.0	26.45	72.0	-	50.8	32.0/12.7	454.0/102063	490.0	13.40
BP300F1	300.0	26..50	65.0	-	57.0	30.0/12.7	735.0/165234	808.0	14.40

1.1.14 BLOCK CHAIN

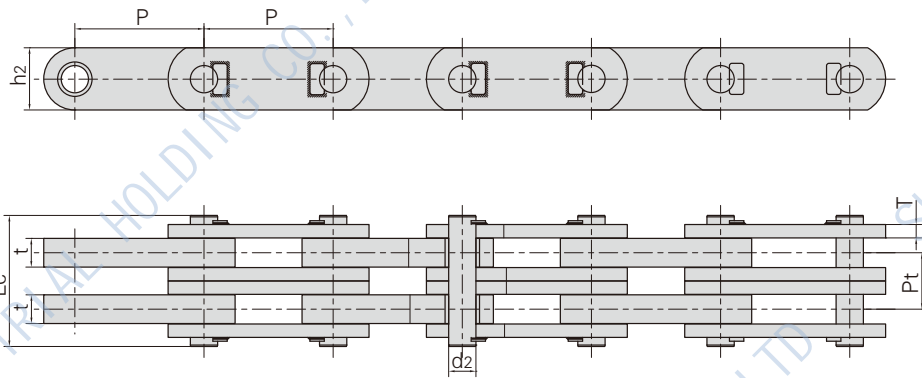


Chain No.	Pitch	Pin Diameter	Pin Length	Inner Plate Depth	Plate Thickness	Attachment Dimension				Tensile Strength	Weight Per Meter
	P	d_2 (max)	L_c (max)	h_2 (max)	t/T (max)	G	H	h_4	d_4	Q (min)	q
	mm	mm	mm	mm	mm	mm	mm	mm	mm	kN/lbf	Kg/m
BP300F2	300.0	31.75	94.0	65.0	32.0/12.0	150.0	10.0	57.5	40.0	699.0/157141	18.20

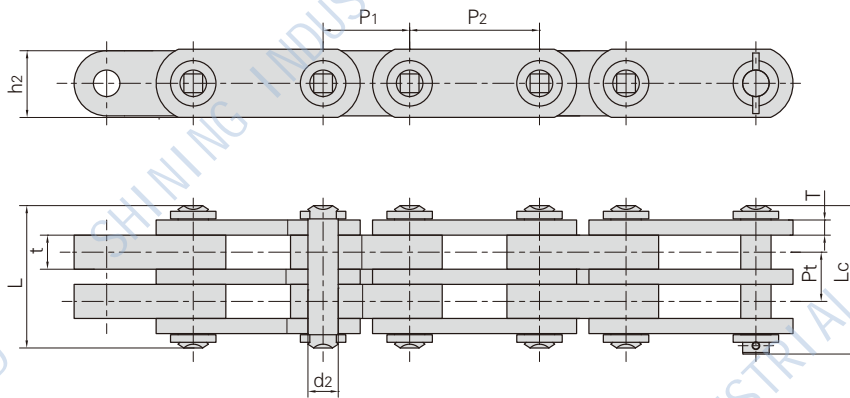


Chain No.	Pitch	Pin Diameter	Pin Length	Inner Plate Depth	Plate Thickness	Attachment Dimension		Tensile Strength	Weight Per Meter
	P	d_2 (max)	L_c (max)	h_2 (max)	t/T (max)	h	L	Q (min)	q
	mm	mm	mm	mm	mm	mm	mm	kN/lbf	Kg/m
BP500F2	500.0	54.00	144.0	110.0	60.0/25.0	110.0	35.0	2160.0/485587	55.90

1.1.14 BLOCK CHAIN



Chain No.	Pitch	Pin Diameter	Pin Length	Inner Plate Depth	Plate Thickness	Transverse Pitch	Average Tensile Strength	Weight Per Meter
	P	d2 (max)	Lc (max)	h2 (max)	t/T (max)	Pt	Q (min)	q
	mm	mm	mm	mm	mm	mm	kN/lbf	Kg/m
BP270F1-2	270.0	57.00	274.0	130.	60.0/28.0	118.0	6000.0/1348854	171.00



Chain No.	Pitch		Pin Diameter	Pin Length		Plate Depth	Plate Thickness	Transverse Pitch	Tensile Strength	Weight Per Meter
	P1	P2	d2 (max)	L (max)	Lc (max)	h2 (max)	t/T (max)	Pt	Q (min)	q
	mm	mm	mm	mm	mm	mm	mm	mm	kN/lbf	Kg/m
BP171.45F1-114.3-2	114.3	171.45	40.0	188.0	196.0	90.0	45.0/20.0	65.0	2000.0/45000	79.80