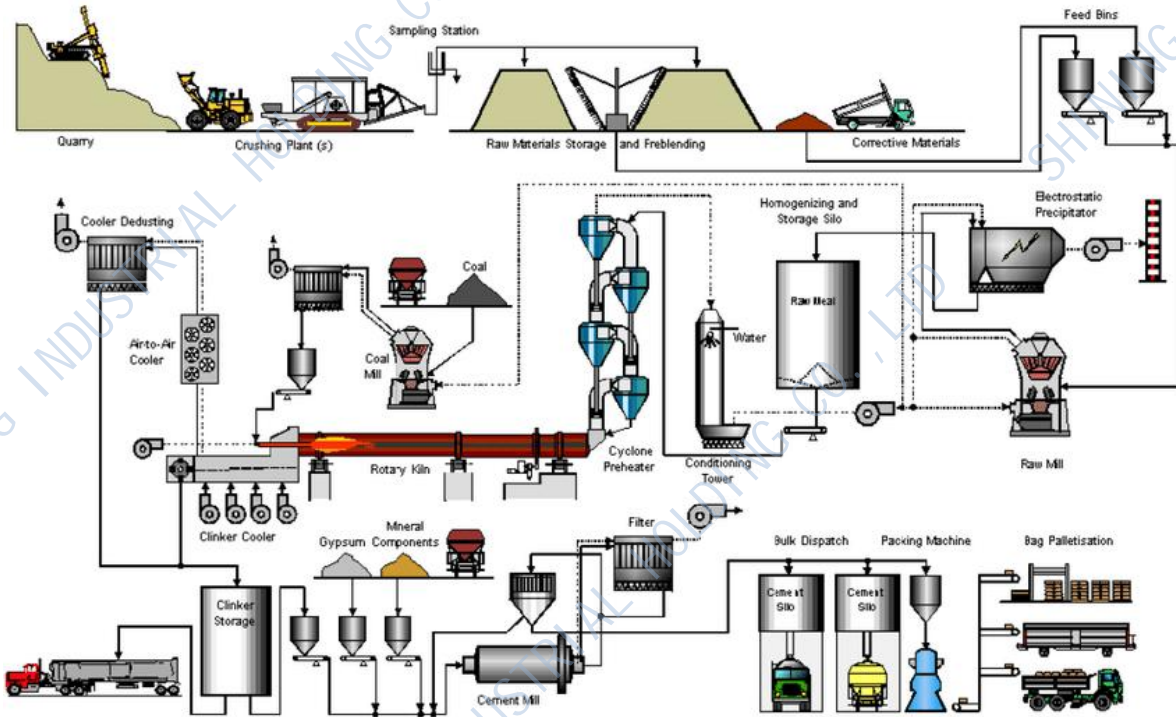


1.2.5 CEMENT CHAIN



Key features of a World bush class chain

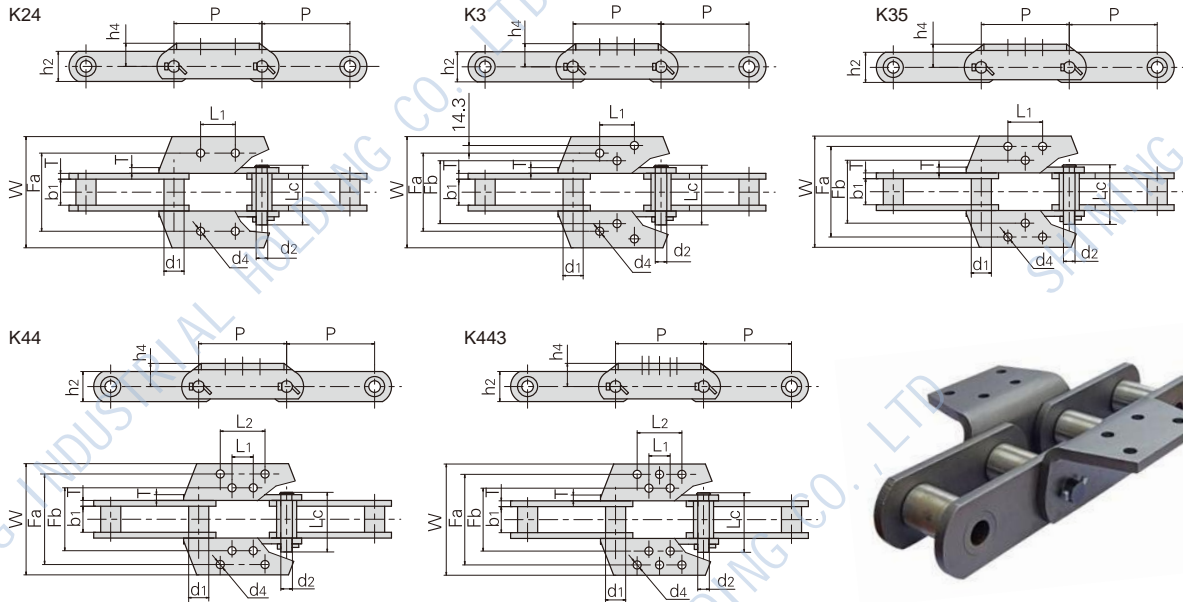
Pins manufactured from a high alloy steel to AISI 4140 initially hardened and tempered to core average 40HRC to give this tension component high tensile strength and toughness. Thereafter the pin is induction hardened to create a hardening layer HRC58-62 at typically 10% of the diameter.

Bushings are produced from a high alloy carburizing steel AISI 5120 subject extra deep case carburizing on all wearing surfaces both internal and external to ensure the best combination of high hardness (HRC58- 62) and maximized case depth.

Sidebars are uniquely up-graded from traditional carbon steels to alloy steel to AISI 5140. These are supplied a hardened and tempered condition average HRC40 to offer increased tensile strength, Quality is not only about materials and heat treatment. Controlled high interference fits are employed in relation to pins and bushings and relative side plates. By pre-stressing the sidebar pitch holes the chain fatigue life is extended.

The chains are produced within the quality system ISO9000 to ensure a high and consistent quality standard.

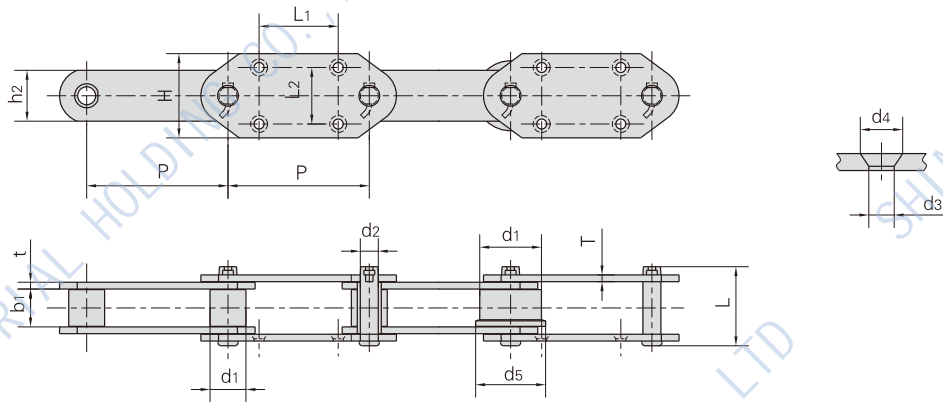
1.2.5 CEMENT CHAIN



Chain No.	Pitch	Bush Diameter	Width Between Inner Plates	Pin Diameter	Pin Length	Plate Depth	Plate Thickness	Tensile Strength	Average Tensile Strength	Weight Per Meter
	P	d1 (max)	b1 (min)	d2 (max)	L (max)	h2 (max)	t/T	Q (min)	Qo	q
	mm	mm	mm	mm	mm	mm	mm	kN/lbf	kN	Kg/m
ER856	152.4	44.5	76.2	25.40	155.5	63.5	12.7	375/84358	592.9	24.5
ER956	152.4	44.5	76.2	25.40	155.5	76.2	12.7	450/101229	767.0	28.0
ER857	152.4	44.5	76.2	25.40	155.5	82.6	12.7	775/174342	852.5	30.0
ER958	152.4	50.8	76.2	28.57	163.5	82.6	14.3	1007/226532	1107.0	37.0
ER859	152.4	60.3	95.3	31.75	190.0	101.6	16.0	1180/265450	1298.0	51.0
ER864	177.8	60.3	95.3	31.75	190.0	101.6	16.0	1230/276698	1353.0	51.0
ER984	177.8	63.5	95.3	35.00	204.0	101.6	16.0	1378/309992	1516.0	53.0

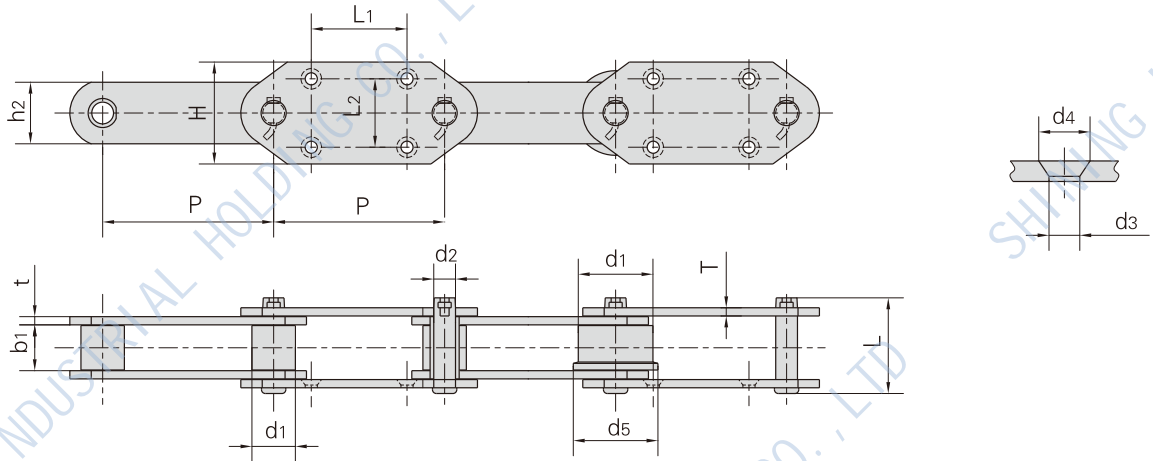
Chain No.	Attachment type	Attachment Dimension									Weight Per att.
		P	h4	Fb	Fa	W	L1	L2	T	d4	
		mm	mm	mm	mm	mm	mm	mm	mm	mm	
ER856	K35	152.4	47.6	184.2	298.5	344	63.5	-	12.7	18.0	2.8
ER856	K24	152.4	47.6	-	184.2	241	63.5	-	12.7	18.0	1.5
ER956		152.4	50.8	-	184.2	241	63.5	-	12.7	18.0	1.5
ER857	K44	152.4	63.5	177.8	304.8	356	88.9	-	12.7	14.2	4.5
ER958		152.4	63.5	177.8	304.8	356	88.9	-	12.7	14.2	4.5
ER859		152.4	76.2	228.6	330.2	381	70.0	114.3	16.0	17.5	5.0
ER864	K443	177.8	76.2	228.6	330.2	381	95.3	140.0	16.0	17.5	7.5
ER984		177.8	76.2	228.6	330.2	378	95.3	139.7	16.0	17.5	7.5

1.2.5 CEMENT CHAIN



Chain No.	Pitch	Roller Diameter		Width Between Inner Plates	Pin Diameter	Pin Length	Plate Depth	Plate Thickness	Tensile Strength	Average Tensile Strength	Weight Per Meter
	P	d1 max	d5	b1 min	d2 max	L max	h2 max	t/T	Q min	Qo	q
	mm	mm		mm	mm	mm	mm	mm	kN/lbf	kN	Kg/m
P95	95.0	50.8	58.0	30.0	13.50	70.0	38.0	6.0	75.0/16871	82.5	9.93
P100-G4	100.0	40.0	-	22.0	11.30	53.5	32.0	4.5	69.0/15511	75.9	5.00
P100-G4	100.0	48.5	-	57.6	24.40	120.0	75.0	10.0	550.0/123640	605.0	31.10
P125-G41	125.0	63.5	-	57.4	32.00	141.0	90.0	12.0	750.0/168600	825.0	47.00
P125-G41	125.0	70.0	-	75.0	36.00	168.0	100.0	16.0	1000.0/224800	1100.0	68.60
P150-G4	150.0	78.0	-	80.0	39.00	172.0	120.0	16.0	1350.0/303480	1485.0	78.90
P150	150.0	50.0	60.0	30.0	14.50	69.0	38.1	8.0/6.3	200.0/44992	220.0	8.64
P150	150.0	54.0	-	40.0	27.00	112.0	68.5	1.0	600.0/67487	680.0	25.70
P150-G4	150.0	29.0	-	30.0	14.50	69.0	38.1	6.3	200.0/44960	220.0	16.70
P152	152.4	38.1	-	36.0	15.50	90.0	50.0	8.0	150.0/33743	165.0	11.91
P152-G4	152.4	36.0	-	36.5	18.00	87.0	50.0	8.0	280.0/62944	308.0	12.10
P200-G4	200.0	44.5	-	51.4	19.10	120.0	60.0	10.0	245.0/55114	269.5	17.60
P200-G4	200.0	44.5	-	51.4	19.10	109.5	50.8	9.5	213.0/47916	243.0	15.10
P200-G4	200.0	50.8	-	56.6	24.00	120.0	70.0	9.5	450.0/101164	490.0	19.40
P200-G4	200.0	44.5	-	51.8	19.10	113.0	60.0	10.0	321.0/72164	353.1	17.80
P250	250.0	63.5	-	67.0	31.80	146.0	90.0	12.0	900.0/101230	495.0	31.70
P250	250.0	80.0	-	51.4	19.10	109.5	50.8	9.5	329.0/73962	378.0	19.79
P250	250.0	100.0	125.0	79.0	22.00	120.0	64.0	10.0	320.0/71939	368.0	29.80
P250-G4	250.0	80.0	-	51.4	22.00	109.0	50.8	9.5	329.0/73959	361.9	19.60
P250-G4	250.0	80.0	105.0	51.5	19.10	110.0	50.0	9.0	356.4/80119	392.0	18.30
P250	250.0	70.0	-	76.0	35.00	165.0	100.0	16.0	1100.0/247280	1210.0	44.10
P300	300.0	70.0	-	75.0	35.00	174.0	100.0	16.0	1065.0/239580	1118.0	47.47
P350-G4	350.0	85.0	-	85.0	41.75	189.5	115.0	16.0	1200.0/269772	1372.0	48.43

1.2.5 CEMENT CHAIN

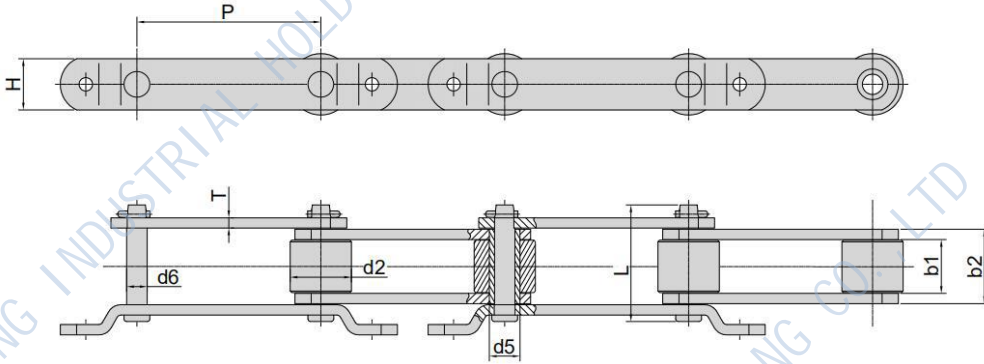


Chain No.	P	H	L1	L2	d3	d4
	mm	mm	mm	mm	mm	mm
P95	95.0	95.0	50.0	70.0	12.0	21.0
P100-G4	100.0	80.0	50.0	50.0	10.0	15.0
P100-G4	100.0	75.0	100.0	106.0	18.0	30.0
P125-G4	125.0	180.0	125.0	130.0	18.0	33.0
P150	150.0	100.0	75.0	70.0	11.0	20.0
P150	150.0	110.0	75.0	75.0	12.0	22.0
P150-G4	150.0	120.0	150.0	170.0	22.0	38.0
P150-G4	150.0	110.0	75.0	70.0	11.0	20.0
P152	152.4	110.0	75.0	70.0	14.5	25.0
P152-G4	152.4	110.0	75.0	70.0	14.0	27.0
P200-G4	200.0	125.0	100.0	80.0	18.0	33.0
P200-G4	200.0	120.0	100.0	80.0	15.0	26.0
P200-G4	200.0	130.0	100.0	80.0	18.0	31.0
P200-G4	200.0	125.0	100.0	80.0	18.0	30.0
P250	250.0	150.0	140.0	100.0	17.7	30.0
P250	250.0	150.0	140.0	100.0	15.0	26.0
P250	250.0	150.0	110.0	100.0	18.0	-
P250-G4	250.0	150.0	140.0	100.0	15.0	26.0
P250-G4	250.0	125.0	150.0	80.0	14.0	27.0
P250	250.0	151.0	140.0	110.0	18.0	30.0
P300	300.0	180.0	170.0	120.0	22.0	39.0
P350-G4	350.0	210.0	225.0	140.0	26.0	42.2

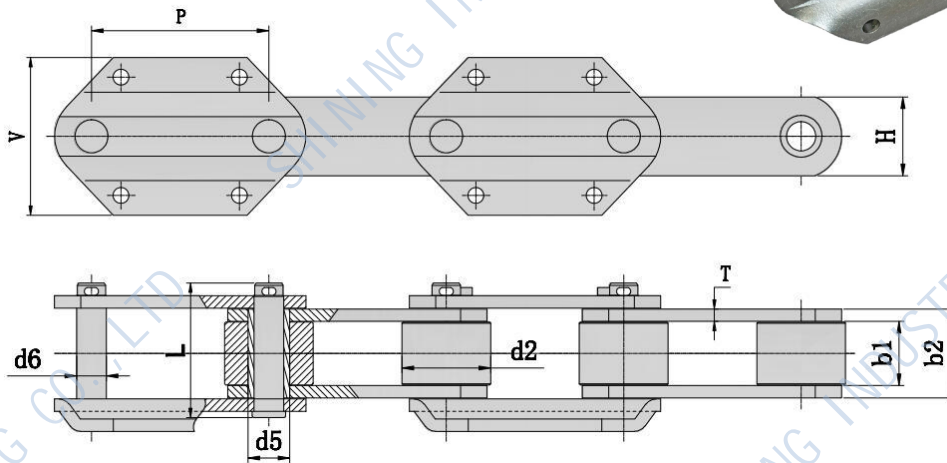


1.2.5 CEMENT CHAIN

G5 Attachment

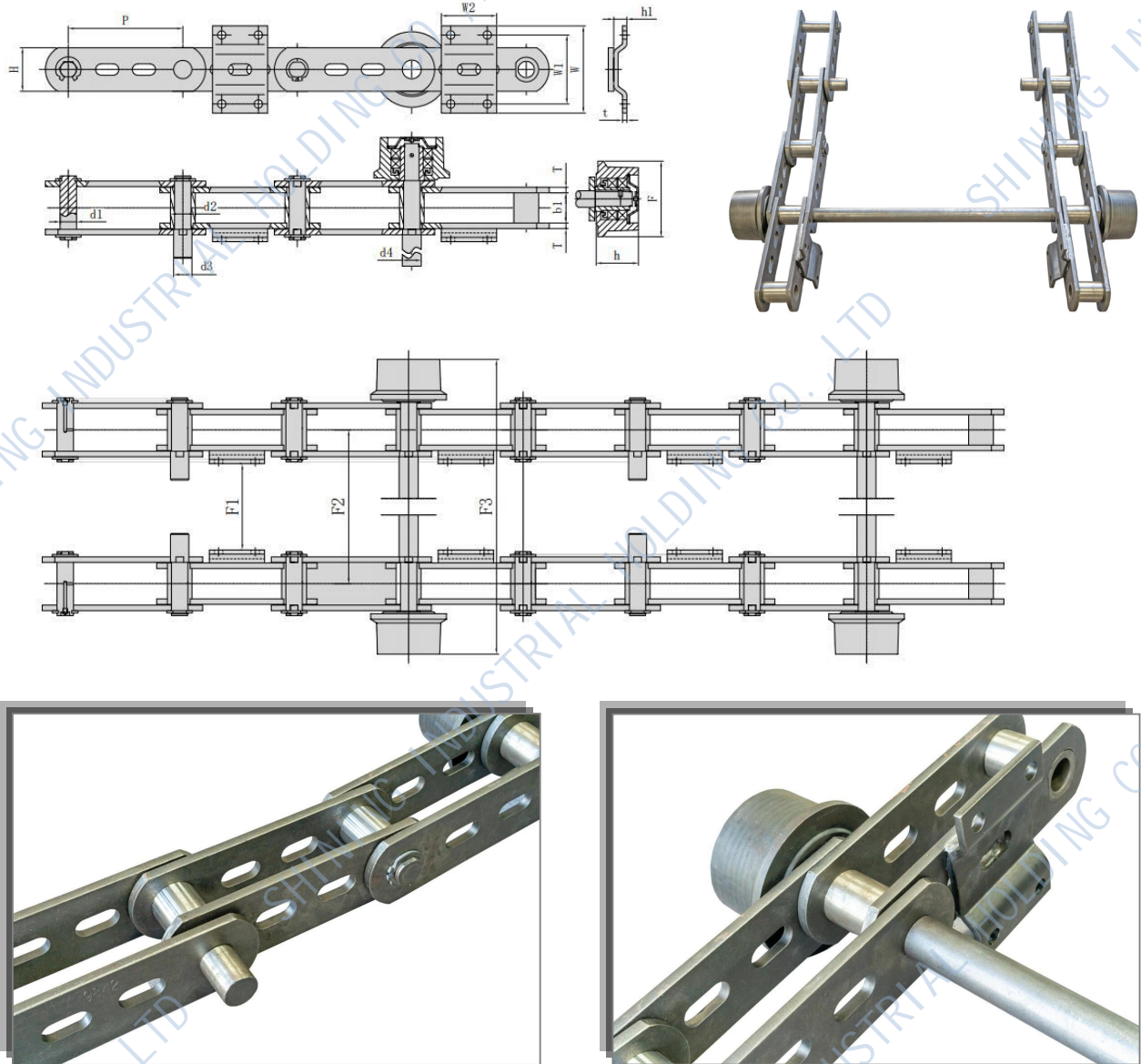


G6 Attachment



Chain No.	P	L	b1	b2	d2	d5	d6	T	H	V	Q min
	mm	mm	mm	mm	mm	mm	mm	mm	mm	mm	kN/lbf
4004-G5	228.6	144.5	66.8	92.2	76.2	38.1	25.4	12.7	63.5	-	445/100036
4065-G5	228.6	156.5	77.7	109.5	107.95	50.8	31.75	16.0	88.9	-	1010/227048
4037-G6	228.6	172.5	82.6	114.7	114.3	53.84	38.1	15.9	101.6	203.2	1180/265264

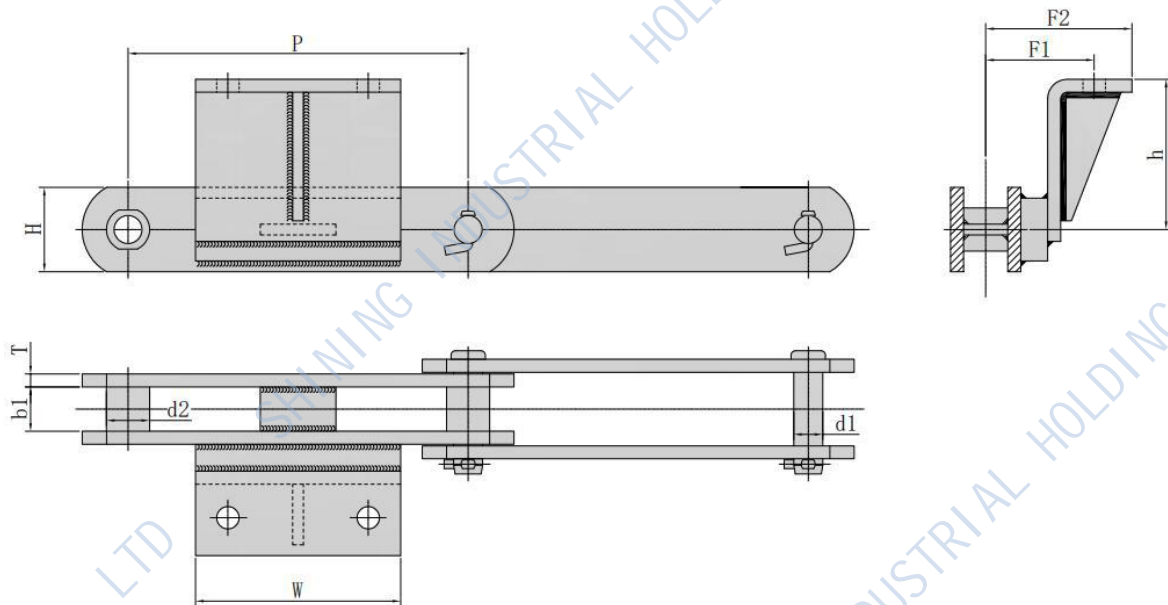
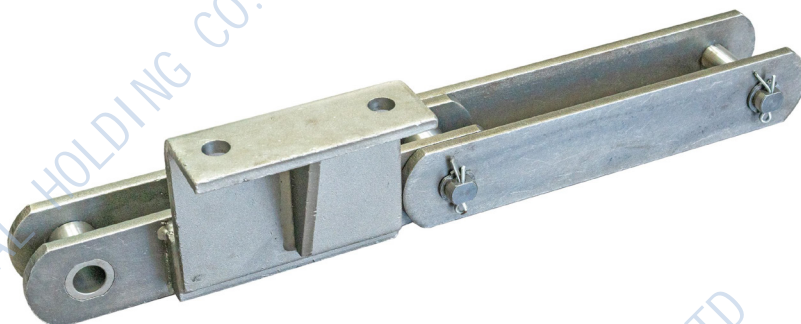
1.2.5 CEMENT CHAIN



Chain No.	P	b1	d1	d2	d3	d4	H	h	h1	Q (min)
	mm	mm	mm	mm	mm	mm	mm	mm	mm	kN/lbf
9842	250.0	66.3	35.9	54.0	40.0	41.28	95.25	92.2	28.7	789/177367

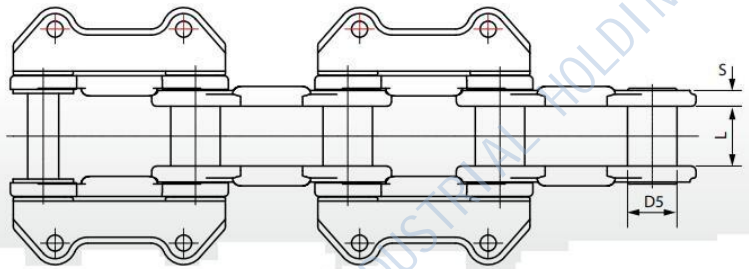
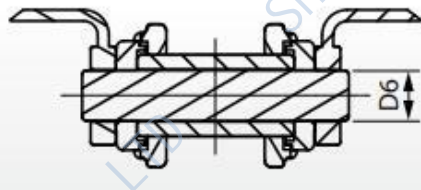
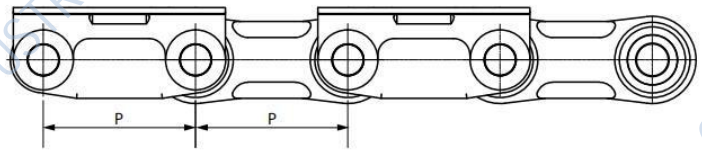
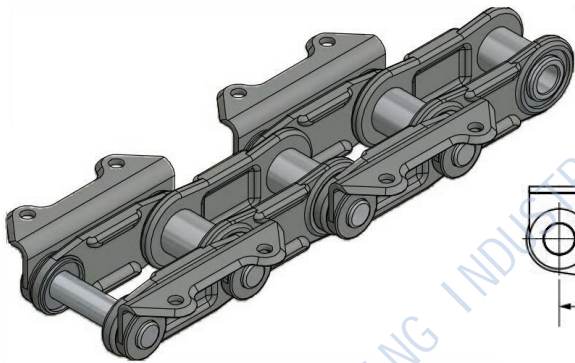
Chain No.	F	T	t	W	W1	W2	F1	F2	F3
	mm	mm	mm	mm	mm	mm	mm	mm	mm
9842	165.0	12.0	9.5	190.5	150.8	120.6	644.5	792.2	1100.0

1.2.5 CEMENT CHAIN



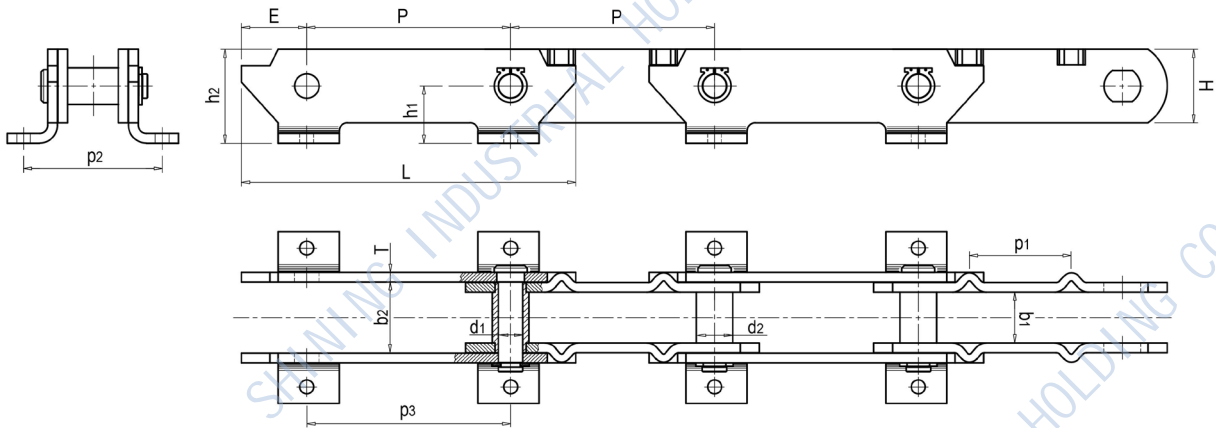
Chain No.	P	b1	d1	d2	T	H	h	W	F1	F2	Q (min)
	mm	mm	mm	mm	mm	mm	mm	mm	mm	mm	kN/lbf
P315-A2	315.0	41.0	26.0	40.0	12.0	78.0	139.0	190.0	100.5	135.5	450/101160

1.2.5 CEMENT CHAIN



Chain No.	Pitch	Pins Diameter	Bushings Outside Dia	Between Sidebars	Sidebars Thickness	Average Ultimate Strength
			mm			kg
P177.8	177.8	40	58	70	18.5	112000
P180-A	180	50	80	106	20	204000
P180-B	180	40	66	100	22	153000
P180-C	180	38	55	85	15	81600

1.2.5 CEMENT CHAIN

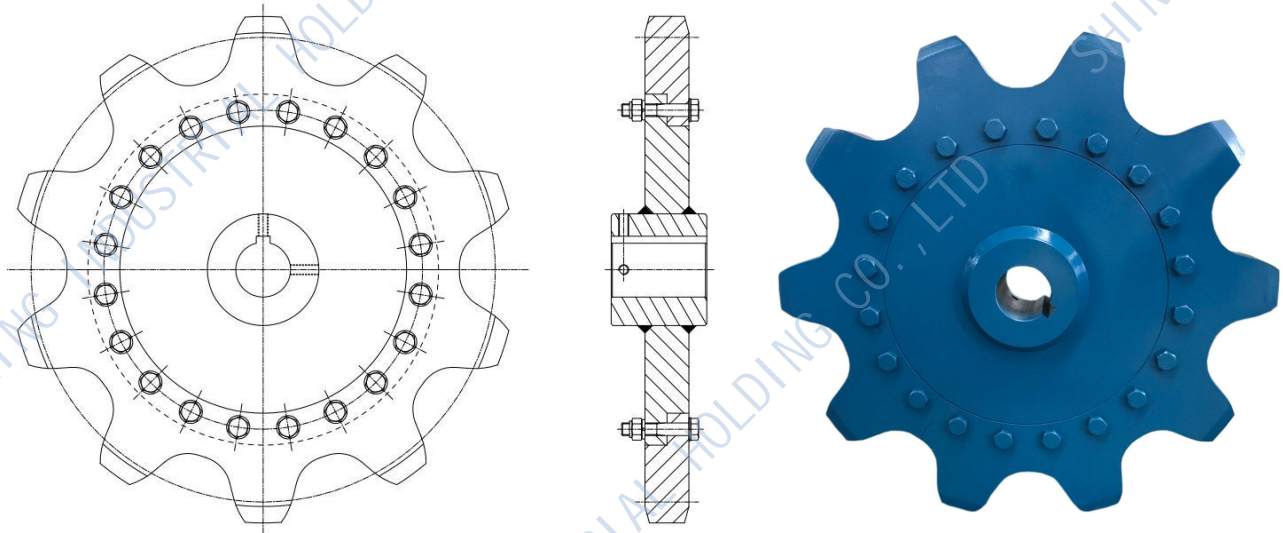


Chain No.	P(mm)	L(mm)	H(mm)	h1(mm)	h2(mm)	T(mm)	E(mm)
P250	250.0	410.0	90.0	70.0	115.0	12.0	80.0

Chain No.	b1(mm)	b2(mm)	d1(mm)	d2(mm)	p1(mm)	p2(mm)	p3(mm)
P250	62.0	87.0	30.0	45.0	125.0	170.0	250.0

1.2.5 CEMENT CHAIN

4037 Sprocket



4004 Sprocket

